

## Product datasheet for **AP53952PU-N**

### SMTNL2 (N-term) Rabbit Polyclonal Antibody

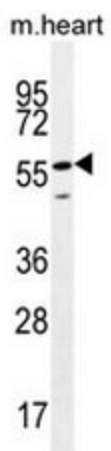
#### Product data:

Product Type:	Primary Antibodies
Applications:	WB
Recommended Dilution:	<b>ELISA:</b> 1/1000. <b>Western Blot:</b> 1/100 - 1/500.
Reactivity:	Human, Mouse
Host:	Rabbit
Isotype:	Ig
Clonality:	Polyclonal
Immunogen:	KLH conjugated synthetic peptide between 28-56 amino acids from the N-terminal region of human SMTNL2
Specificity:	This antibody reacts to SMTNL2.
Formulation:	PBS State: Aff - Purified State: Liquid purified Ig fraction Preservative: 0.09% (W/V) sodium azide
Concentration:	lot specific
Purification:	Affinity chromatography on Protein A
Conjugation:	Unconjugated
Storage:	Store the antibody undiluted at 2-8°C for one month or (in aliquots) at -20°C for longer. Avoid repeated freezing and thawing.
Stability:	Shelf life: one year from despatch.
Predicted Protein Size:	50196 Da
Gene Name:	smoothelin like 2
Database Link:	<a href="#">Entrez Gene 342527 Human Q2TAL5</a>
Synonyms:	Smoothelin-like protein 2



[View online »](#)

## Product images:



SMTNL2 Antibody (N-term) western blot analysis in mouse heart tissue lysates (35ug/lane). This demonstrates the SMTNL2 antibody detected the SMTNL2 protein (arrow).