

## Product datasheet for **AP53951PU-N**

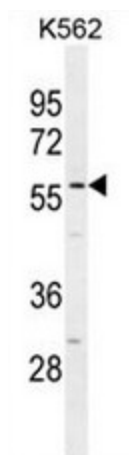
### SMTNL1 (Center) Rabbit Polyclonal Antibody

#### Product data:

Product Type:	Primary Antibodies
Applications:	WB
Recommended Dilution:	<b>ELISA:</b> 1/1000. <b>Western Blot:</b> 1/100 - 1/500.
Reactivity:	Human
Host:	Rabbit
Isotype:	Ig
Clonality:	Polyclonal
Immunogen:	KLH conjugated synthetic peptide between 137-167 amino acids from the Central region of human SMTNL1
Specificity:	This antibody reacts to SMTNL1.
Formulation:	PBS State: Aff - Purified State: Liquid purified Ig fraction Preservative: 0.09% (W/V) sodium azide
Concentration:	lot specific
Purification:	Affinity chromatography on Protein A
Conjugation:	Unconjugated
Storage:	Store the antibody undiluted at 2-8°C for one month or (in aliquots) at -20°C for longer. Avoid repeated freezing and thawing.
Stability:	Shelf life: one year from despatch.
Predicted Protein Size:	48953 Da
Gene Name:	smoothelin-like 1
Database Link:	<a href="#">Entrez Gene 219537 Human A8MU46</a>
Synonyms:	Smoothelin-like protein 1



[View online »](#)

**Product images:**

SMTNL1 Antibody (Center) western blot analysis in K562 cell line lysates (35ug/lane). This demonstrates the SMTNL1 antibody detected the SMTNL1 protein (arrow).