

Product datasheet for **AP53946PU-N**

SMNDC1 (N-term) Rabbit Polyclonal Antibody

Product data:

Product Type:	Primary Antibodies
Applications:	FC, WB
Recommended Dilution:	ELISA: 1/1000. Western Blot: 1/100 - 1/500. Flow Cytometry: 1/10 - 1/50.
Reactivity:	Human, Mouse
Host:	Rabbit
Isotype:	Ig
Clonality:	Polyclonal
Immunogen:	KLH conjugated synthetic peptide between 19~48 amino acids from the N-terminal region of human SMNDC1
Specificity:	This antibody reacts to SMNDC1.
Formulation:	PBS State: Aff - Purified State: Liquid purified Ig fraction Preservative: 0.09% (W/V) sodium azide
Concentration:	lot specific
Purification:	Affinity chromatography on Protein A
Conjugation:	Unconjugated
Storage:	Store the antibody undiluted at 2-8°C for one month or (in aliquots) at -20°C for longer. Avoid repeated freezing and thawing.
Stability:	Shelf life: one year from despatch.
Predicted Protein Size:	26711 Da
Gene Name:	survival motor neuron domain containing 1
Database Link:	Entrez Gene 76479 Mouse Entrez Gene 10285 Human O75940



[View online »](#)

Background:

This protein is a paralog of SMN1 gene, which encodes the survival motor neuron protein, mutations in which are cause of autosomal recessive proximal spinal muscular atrophy. The protein encoded by this gene is a nuclear protein that has been identified as a constituent of the spliceosome complex. This protein is differentially expressed, with abundant levels in skeletal muscle, and may share similar cellular function as the SMN1 gene.

Synonyms:

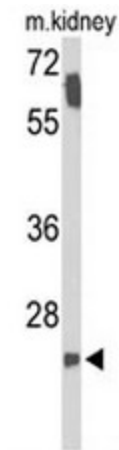
SMN-related protein, SMNR, SPF30

Protein Families:

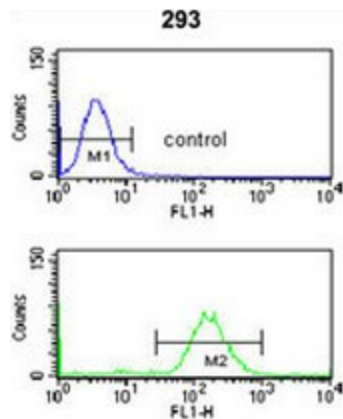
Stem cell - Pluripotency

Protein Pathways:

Spliceosome

Product images:


Western blot analysis of SMNDC1 Antibody (N-term) in mouse kidney tissue lysates (35ug/lane). SMNDC1 (arrow) was detected using the purified Pab.



SMNDC1 Antibody (N-term) flow cytometry analysis of 293 cells (bottom histogram) compared to a negative control cell (top histogram). FITC-conjugated goat-anti-rabbit secondary antibodies were used for the analysis.