

Product datasheet for **AP53945PU-N**

SMEK2 (PPP4R3B) (C-term) Rabbit Polyclonal Antibody

Product data:

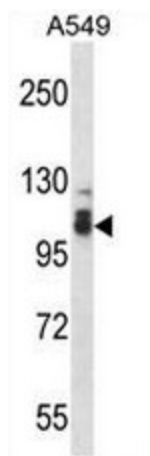
Product Type:	Primary Antibodies
Applications:	WB
Recommended Dilution:	ELISA: 1/1000. Western Blot: 1/100 - 1/500.
Reactivity:	Human
Host:	Rabbit
Isotype:	Ig
Clonality:	Polyclonal
Immunogen:	KLH conjugated synthetic peptide between 719-748 amino acids from the C-terminal region of human SMEK2
Specificity:	This antibody reacts to SMEK2.
Formulation:	PBS State: Aff - Purified State: Liquid purified Ig fraction Preservative: 0.09% (W/V) sodium azide
Concentration:	lot specific
Purification:	Affinity chromatography on Protein A
Conjugation:	Unconjugated
Storage:	Store the antibody undiluted at 2-8°C for one month or (in aliquots) at -20°C for longer. Avoid repeated freezing and thawing.
Stability:	Shelf life: one year from despatch.
Predicted Protein Size:	97444 Da
Gene Name:	protein phosphatase 4 regulatory subunit 3B
Database Link:	Entrez Gene 57223 Human Q5MIZ7
Background:	Regulatory subunit of serine/threonine-protein phosphatase 4 (PP4). May regulate the activity of PPP4C at centrosomal microtubule organizing centers.



[View online »](#)

Synonyms: SMEK homolog 2, KIAA1387, PP4R3B, PPP4R3B

Product images:



SMEK2 Antibody (C-term) western blot analysis in A549 cell line lysates (35ug/lane). This demonstrates the SMEK2 antibody detected the SMEK2 protein (arrow).