

## Product datasheet for **AP53942PU-N**

### SMARCD1 (C-term) Rabbit Polyclonal Antibody

#### Product data:

Product Type:	Primary Antibodies
Applications:	WB
Recommended Dilution:	<b>ELISA:</b> 1/1000. <b>Western Blot:</b> 1/100 - 1/500.
Reactivity:	Human
Host:	Rabbit
Isotype:	Ig
Clonality:	Polyclonal
Immunogen:	KLH conjugated synthetic peptide between 430-460 amino acids from the C-terminal region of human SMARCD1
Specificity:	This antibody reacts to SMARCD1.
Formulation:	PBS State: Aff - Purified State: Liquid purified Ig fraction Preservative: 0.09% (W/V) sodium azide
Concentration:	lot specific
Purification:	Affinity chromatography on Protein A
Conjugation:	Unconjugated
Storage:	Store the antibody undiluted at 2-8°C for one month or (in aliquots) at -20°C for longer. Avoid repeated freezing and thawing.
Stability:	Shelf life: one year from despatch.
Predicted Protein Size:	58233 Da
Gene Name:	SWI/SNF related, matrix associated, actin dependent regulator of chromatin, subfamily d, member 1
Database Link:	<a href="#">Entrez Gene 6602 Human Q96GM5</a>



[View online »](#)

**Background:**

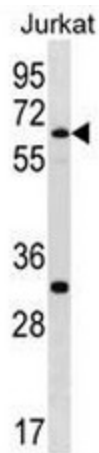
The protein encoded by this gene is a member of the SWI/SNF family of proteins, whose members display helicase and ATPase activities and which are thought to regulate transcription of certain genes by altering the chromatin structure around those genes. The encoded protein is part of the large ATP-dependent chromatin remodeling complex SNF/SWI and has sequence similarity to the yeast Swp73 protein. Two transcript variants encoding different isoforms have been found for this gene.

**Synonyms:**

BAF60A; CRACD1; Rsc6p

**Protein Families:**

Transcription Factors

**Product images:**

SMARCD1 Antibody (C-term) western blot analysis in Jurkat cell line lysates (35ug/lane). This demonstrates the SMARCD1 antibody detected the SMARCD1 protein (arrow).