

Product datasheet for **AP53941PU-N**

SMAP2 (Center) Rabbit Polyclonal Antibody

Product data:

Product Type:	Primary Antibodies
Applications:	IHC, WB
Recommended Dilution:	ELISA: 1/1000. Western Blot: 1/100-1/500. Immunohistochemistry on Paraffin Sections: 1/50-1/100.
Reactivity:	Human
Host:	Rabbit
Isotype:	Ig
Clonality:	Polyclonal
Immunogen:	KLH conjugated synthetic peptide between 110-140 amino acids from the Central region of Human SMAP2.
Specificity:	This antibody recognizes Human SMAP2 (Center).
Formulation:	PBS State: Aff - Purified State: Liquid purified Ig fraction Preservative: 0.09% Sodium Azide
Concentration:	lot specific
Purification:	Affinity Chromatography on Protein A
Conjugation:	Unconjugated
Storage:	Store undiluted at 2-8°C for one month or (in aliquots) at -20°C for longer. Avoid repeated freezing and thawing.
Stability:	Shelf life: one year from despatch.
Gene Name:	small ArfGAP2
Database Link:	Entrez Gene 64744 Human Q8WU79
Background:	SMAP2 is a GTPase activating protein that acts on ARF1. Can also activate ARF6 (in vitro). May play a role in clathrin-dependent retrograde transport from early endosomes to the trans-Golgi network (By similarity).



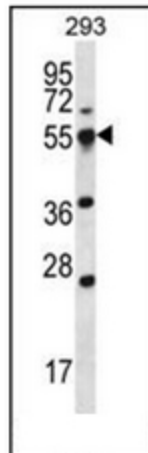
[View online »](#)

Synonyms: SMAP1L, Stromal membrane-associated protein 2

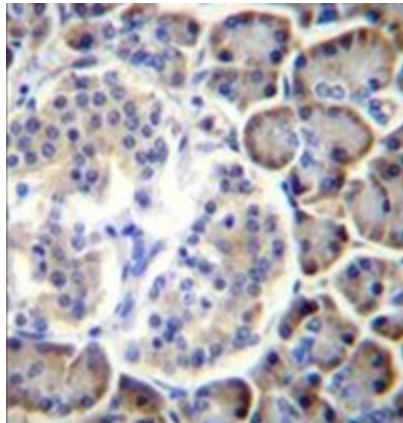
Note: **Molecular Weight:** 46786 Da

Protein Pathways: Endocytosis

Product images:



Western blot analysis of SMAP2 Antibody in 293 cell line lysates (35ug/lane). This demonstrates the SMAP2 antibody detected the SMAP2 protein (arrow).



Formalin fixed, paraffin embedded human pancreas tissue stained with SMAP2 Antibody followed by peroxidase conjugation of the secondary antibody and DAB staining. This data demonstrates the use of SMAP2 Antibody (Center) for immunohistochemistry. Clinical relevance has not been evaluated.