

Product datasheet for **AP53937PU-N**

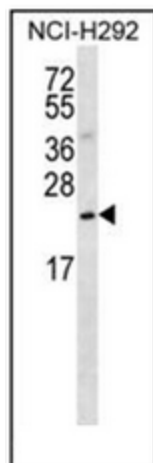
SLMO2 (PRELID3B) (Center) Rabbit Polyclonal Antibody

Product data:

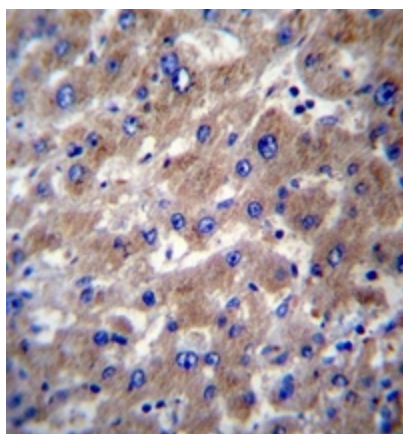
Product Type:	Primary Antibodies
Applications:	IHC, WB
Recommended Dilution:	ELISA: 1/1000. Western Blot: 1/100-1/500. Immunohistochemistry on Paraffin Sections: 1/10-1/50.
Reactivity:	Human
Host:	Rabbit
Isotype:	Ig
Clonality:	Polyclonal
Immunogen:	KLH conjugated synthetic peptide between 99-129 amino acids from the Central region of Human SLMO2.
Specificity:	This antibody recognizes Human SLMO2 (Center).
Formulation:	PBS State: Aff - Purified State: Liquid purified Ig fraction Preservative: 0.09% Sodium Azide
Concentration:	lot specific
Purification:	Affinity Chromatography on Protein A
Conjugation:	Unconjugated
Storage:	Store undiluted at 2-8°C for one month or (in aliquots) at -20°C for longer. Avoid repeated freezing and thawing.
Stability:	Shelf life: one year from despatch.
Gene Name:	PRELI domain containing 3B
Database Link:	Entrez Gene 51012 Human Q9Y3B1
Synonyms:	Protein slowmo homolog 2, C20orf45
Note:	Molecular Weight: 21495 Da



[View online »](#)

Product images:

Western blot analysis of SLMO2 Antibody in NCI-H292 cell line lysates (35ug/lane). This demonstrates the SLMO2 antibody detected the SLMO2 protein (arrow).



Formalin fixed, paraffin embedded human liver tissue stained with SLMO2 Antibody followed by peroxidase conjugation of the secondary antibody and DAB staining. This data demonstrates the use of SLMO2 Antibody (Center) for immunohistochemistry. Clinical relevance has not been evaluated.