

## Product datasheet for **AP53935PU-N**

### SLITRK4 (C-term) Rabbit Polyclonal Antibody

#### Product data:

Product Type:	Primary Antibodies
Applications:	WB
Recommended Dilution:	<b>ELISA:</b> 1/1000. <b>Western Blot:</b> 1/100-1/500.
Reactivity:	Human
Host:	Rabbit
Isotype:	Ig
Clonality:	Polyclonal
Immunogen:	KLH conjugated synthetic peptide between 747-777 amino acids from the C-terminal region of Human SLITRK4
Specificity:	This antibody recognizes Human SLITRK4 (C-term).
Formulation:	PBS containing 0.09% (W/V) Sodium Azide as preservative State: Aff - Purified State: Liquid purified Ig fraction
Concentration:	lot specific
Purification:	Protein A column, followed by peptide affinity purification
Conjugation:	Unconjugated
Storage:	Store undiluted at 2-8°C for one month or (in aliquots) at -20°C for longer. Avoid repeated freezing and thawing.
Stability:	Shelf life: one year from despatch.
Gene Name:	SLIT and NTRK like family member 4
Database Link:	<a href="#">Entrez Gene 139065 Human Q8IW52</a>



[View online »](#)

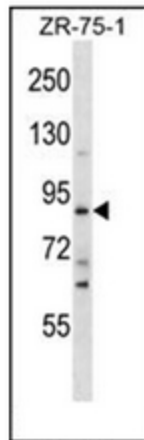
**Background:** This gene encodes a transmembrane protein belonging to the the SLITRK family. These family members include two N-terminal leucine-rich repeat domains similar to those found in the axonal growth-controlling protein SLIT, as well as C-terminal regions similar to neurotrophin receptors. Studies of an homologous protein in mouse suggest that this family member functions to suppress neurite outgrowth. Alternative splicing results in multiple transcript variants.

**Synonyms:** DKFZp547M2010; OTTHUMP00000024187

**Note:** **Molecular Weight:** 94331 Da

**Protein Families:** Transmembrane

**Product images:**



Western blot analysis of SLITRK4 Antibody (C-term) in ZR-75-1 cell line lysates (35ug/lane). This demonstrates the SLITRK4 antibody detected the SLITRK4 protein (arrow).