

Product datasheet for **AP53934PU-N**

SLITRK2 (C-term) Rabbit Polyclonal Antibody

Product data:

Product Type:	Primary Antibodies
Applications:	WB
Recommended Dilution:	ELISA: 1/1000. Western Blot: 1/100-1/500.
Reactivity:	Human
Host:	Rabbit
Isotype:	Ig
Clonality:	Polyclonal
Immunogen:	KLH conjugated synthetic peptide between 772-801 amino acids from the C-terminal region of Human SLITRK2.
Specificity:	This antibody recognizes Human SLITRK2 (C-term).
Formulation:	PBS State: Aff - Purified State: Liquid purified Ig fraction Preservative: 0.09% Sodium Azide
Concentration:	lot specific
Purification:	Affinity Chromatography on Protein A
Conjugation:	Unconjugated
Gene Name:	SLIT and NTRK like family member 2
Database Link:	Entrez Gene 84631 Human Q9H156
Background:	This gene encodes an integral membrane protein that contains two N-terminal leucine-rich repeats domains and contains C-terminal regions similar to neurotrophin receptors. The encoded protein may play a role in modulating neurite activity. Alternatively spliced transcript variants encoding the same protein have been described.
Synonyms:	CXorf2, KIAA1854, SLITL1

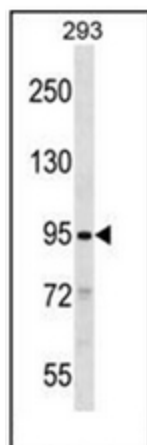


[View online »](#)

Note: **Molecular Weight:** 95404 Da

Protein Families: Transmembrane

Product images:



Western blot analysis of SLITRK2 Antibody (C-term) in 293 cell line lysates (35ug/lane). This demonstrates the SLITRK2 antibody detected the SLITRK2 protein (arrow)