

Product datasheet for **AP53933PU-N**

SLFNL1 (N-term) Rabbit Polyclonal Antibody

Product data:

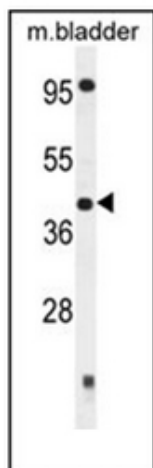
Product Type:	Primary Antibodies
Applications:	WB
Recommended Dilution:	ELISA: 1/1000. Western Blot: 1/100-1/500.
Reactivity:	Human, Mouse
Host:	Rabbit
Isotype:	Ig
Clonality:	Polyclonal
Immunogen:	KLH conjugated synthetic peptide between 65-95 amino acids from the N-terminal region of Human SLFNL1.
Specificity:	This antibody recognizes Human and Mouse SLFNL1 (N-term).
Formulation:	PBS State: Aff - Purified State: Liquid purified Ig fraction Preservative: 0.09% Sodium Azide
Concentration:	lot specific
Purification:	Affinity Chromatography on Protein A
Conjugation:	Unconjugated
Storage:	Store undiluted at 2-8°C for one month or (in aliquots) at -20°C for longer. Avoid repeated freezing and thawing.
Stability:	Shelf life: one year from despatch.
Gene Name:	schlafen like 1
Database Link:	Entrez Gene 194219 Mouse Entrez Gene 200172 Human Q499Z3
Background:	SLFNL1 belongs to the Schlafen family. The function of the SLFNL1 protein remains unknown. There are four different isoforms
Synonyms:	Schlafen-like protein 1



[View online »](#)

Note: **Molecular Weight:** 45603 Da

Product images:



Western blot analysis of SLFNL1 Antibody (N-term) in Mouse bladder tissue lysates (35ug/lane). This demonstrates the SLFNL1 antibody detected the SLFNL1 protein (arrow).