

Product datasheet for **AP53932PU-N**

SLFN12L (N-term) Rabbit Polyclonal Antibody

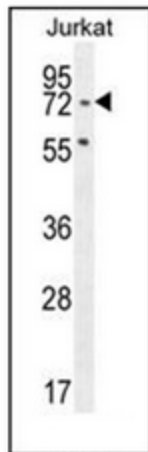
Product data:

Product Type:	Primary Antibodies
Applications:	FC, WB
Recommended Dilution:	ELISA: 1/1000. Western Blot: 1/100-1/500. Flow Cytometry: 1/10-1/50.
Reactivity:	Human
Host:	Rabbit
Isotype:	Ig
Clonality:	Polyclonal
Immunogen:	KLH conjugated synthetic peptide between 98-127 amino acids from the N-terminal region of Human SLFN12L
Specificity:	This antibody recognizes SLFN12L (N-term).
Formulation:	PBS State: Aff - Purified State: Liquid purified Ig fraction Preservative: 0.09% Sodium Azide
Concentration:	lot specific
Purification:	Affinity Chromatography on Protein A
Conjugation:	Unconjugated
Storage:	Store undiluted at 2-8°C for one month or (in aliquots) at -20°C for longer. Avoid repeated freezing and thawing.
Stability:	Shelf life: one year from despatch.
Gene Name:	schlafen family member 12 like
Database Link:	Entrez Gene 100506736 Human Q6IEE8
Synonyms:	Schlafen family member 12-like,SLFN5
Note:	Molecular Weight: 70568 Da

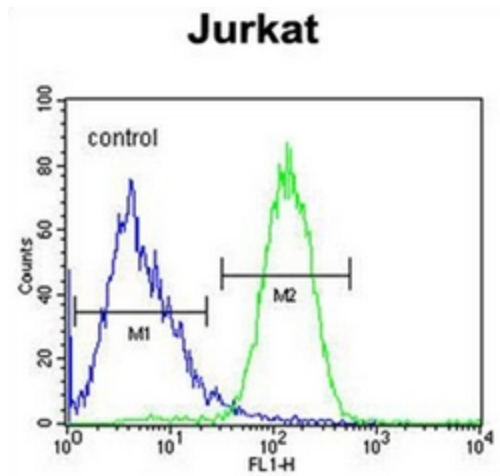


[View online »](#)

Product images:



Western blot analysis of SLFN12L Antibody (N-term) in Jurkat cell line lysates (35ug/lane). This demonstrates the SLFN12L antibody detected the SLFN12L protein (arrow).



Flow cytometric analysis of Jurkat cells using SLFN12L Antibody (N-term) (right histogram) compared to a negative control cell (left histogram). FITC-conjugated goat-anti-rabbit secondary antibodies were used for the analysis.