

## Product datasheet for **AP53931PU-N**

### SLCO4C1 (C-term) Rabbit Polyclonal Antibody

#### Product data:

Product Type:	Primary Antibodies
Applications:	FC, IHC, WB
Recommended Dilution:	<b>ELISA:</b> 1/1000. <b>Western Blot:</b> 1/100-1/500. <b>Flow Cytometry:</b> 1/10-1/50. <b>Immunohistochemistry on Paraffin Sections:</b> 1/50-1/100.
Reactivity:	Human
Host:	Rabbit
Isotype:	Ig
Clonality:	Polyclonal
Immunogen:	KLH conjugated synthetic peptide between 523-553 amino acids from the C-terminal region of Human SLCO4C1.
Specificity:	This antibody recognizes Human SLCO4C1 / OATP4C1 (C-term).
Formulation:	PBS State: Aff - Purified State: Liquid purified Ig fraction Preservative: 0.09% Sodium Azide
Concentration:	lot specific
Purification:	Affinity Chromatography on Protein A
Conjugation:	Unconjugated
Storage:	Store undiluted at 2-8°C for one month or (in aliquots) at -20°C for longer. Avoid repeated freezing and thawing.
Stability:	Shelf life: one year from despatch.
Gene Name:	solute carrier organic anion transporter family member 4C1
Database Link:	<a href="#">Entrez Gene 353189 Human Q6ZQN7</a>



[View online »](#)

**Background:**

SLCO4C1 belongs to the organic anion transporter (OATP) family. OATPs are involved in the membrane transport of bile acids, conjugated steroids, thyroid hormone, eicosanoids, peptides, and numerous drugs in many tissues (Mikkaichi et al., 2004 [PubMed 14993604]).

**Synonyms:**

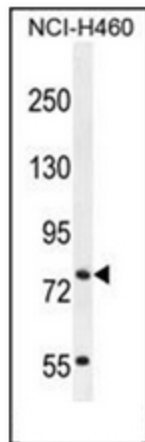
OATPX, OATP-H, OATP-M1, SLC21A20

**Note:**

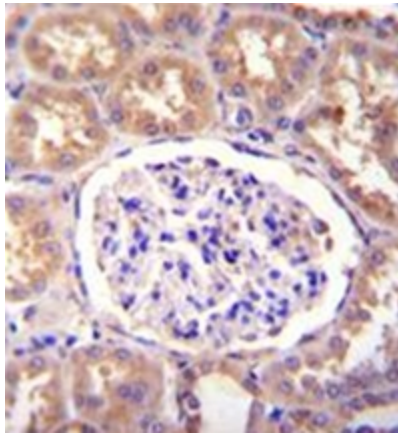
**Molecular Weight:** 78948 Da

**Protein Families:**

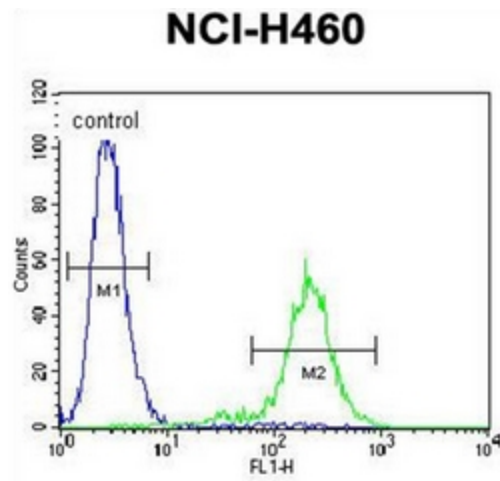
Transmembrane

**Product images:**

Western blot analysis of SLCO4C1 / OATP4C1 Antibody (C-term) in NCI-H460 cell line lysates (35ug/lane). This demonstrates the SLCO4C1 antibody detected the SLCO4C1 protein (arrow).



Formalin fixed, paraffin embedded human kidney tissue stained with SLCO4C1 / OATP4C1 Antibody (C-term) followed by peroxidase conjugation of the secondary antibody and DAB staining.



Flow cytometric analysis of NCI-H460 cells using SLCO4C1 / OATP4C1 Antibody (C-term) (right histogram) compared to a negative control cell (left histogram). FITC-conjugated goat-anti-rabbit secondary antibodies were used for the analysis.