

Product datasheet for **AP53929PU-N**

OATP2 (SLCO1B1) (Center) Rabbit Polyclonal Antibody

Product data:

Product Type:	Primary Antibodies
Applications:	WB
Recommended Dilution:	ELISA: 1/1000. Western Blot: 1/100-1/500.
Reactivity:	Human
Host:	Rabbit
Isotype:	Ig
Clonality:	Polyclonal
Immunogen:	KLH conjugated synthetic peptide between 273~302 amino acids from the Central region of Human SLCO1B1
Specificity:	This antibody recognizes Human SLCO1B1 (Center).
Formulation:	PBS State: Aff - Purified State: Liquid purified Ig fraction Preservative: 0.09% Sodium Azide
Concentration:	lot specific
Purification:	Affinity Chromatography on Protein A
Conjugation:	Unconjugated
Storage:	Store undiluted at 2-8°C for one month or (in aliquots) at -20°C for longer. Avoid repeated freezing and thawing.
Stability:	Shelf life: one year from despatch.
Gene Name:	solute carrier organic anion transporter family member 1B1
Database Link:	Entrez Gene 10599 Human Q9Y6L6



[View online »](#)

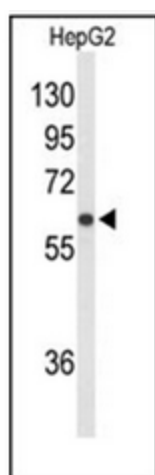
Background: SLCO1B1 is a liver-specific member of the organic anion transporter family. This protein is a transmembrane receptor that mediates the sodium-independent uptake of numerous endogenous compounds including bilirubin, 17-beta-glucuronosyl estradiol and leukotriene C4. This protein is also involved in the removal of drug compounds such as statins, bromosulfophthalein and rifampin from the blood into the hepatocytes. Polymorphisms in the gene encoding this protein are associated with impaired transporter function.

Synonyms: LST1, LST-1, OATP-2, OATPC, OATP-C, SLC21A6

Note: **Molecular Weight:** 76449 Da

Protein Families: Druggable Genome, Transmembrane

Product images:



Western blot analysis of SLCO1B1 / OATP2 Antibody (Center) in HepG2 cell line lysates (35ug/lane). SLCO1B1 (arrow) was detected using the purified Pab