

Product datasheet for **AP53928PU-N**

SLAMF9 (C-term) Rabbit Polyclonal Antibody

Product data:

Product Type:	Primary Antibodies
Applications:	WB
Recommended Dilution:	Peptide ELISA: 1/1000. Western Blot: 1/1000.
Reactivity:	Human
Host:	Rabbit
Isotype:	Ig
Clonality:	Polyclonal
Immunogen:	KLH conjugated synthetic peptide between 242-270 amino acids from the C-terminal region of Human SLAMF9.
Specificity:	This antibody recognizes Human SLAMF9 (C-term).
Formulation:	PBS State: Aff - Purified State: Liquid purified Ig fraction Preservative: 0.09% Sodium Azide
Concentration:	lot specific
Purification:	Affinity Chromatography on Protein A
Conjugation:	Unconjugated
Storage:	Store undiluted at 2-8°C for one month or (in aliquots) at -20°C for longer. Avoid repeated freezing and thawing.
Stability:	Shelf life: one year from despatch.
Gene Name:	SLAM family member 9
Database Link:	Entrez Gene 89886 Human Q96A28
Background:	SLAMF9 is a member of the signaling lymphocytic activation molecule family. The encoded protein is a cell surface molecule that consists of two extracellular immunoglobulin domains, a transmembrane domain and a short cytoplasmic tail that lacks the signal transduction motifs found in other family members.

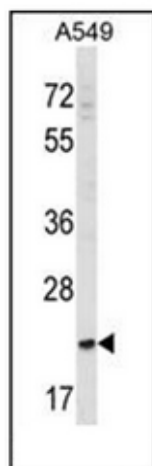


[View online »](#)

Synonyms: CD2F10, CD2F-10, CD84-H1

Note: **Molecular Weight:** 23kd Isoform 2. 32436 Da

Product images:



Western blot analysis of SLAMF9 Antibody (C-term) in A549 cell line lysates (35ug/lane). This demonstrates the SLAMF9 antibody detected the SLAMF9 protein (arrow).