

Product datasheet for **AP53927PU-N**

SLAMF8 (C-term) Rabbit Polyclonal Antibody

Product data:

Product Type:	Primary Antibodies
Applications:	WB
Recommended Dilution:	ELISA: 1/1000. Western Blot: ~1/1000.
Reactivity:	Human
Host:	Rabbit
Isotype:	Ig
Clonality:	Polyclonal
Immunogen:	KLH conjugated synthetic peptide between 256-285 amino acids from the C-terminal region of Human SLAMF8.
Specificity:	This antibody recognizes Human SLAMF8 (C-term).
Formulation:	PBS State: Aff - Purified State: Liquid purified Ig fraction Preservative: 0.09% Sodium Azide
Concentration:	lot specific
Purification:	Affinity Chromatography on Protein A
Conjugation:	Unconjugated
Storage:	Store undiluted at 2-8°C for one month or (in aliquots) at -20°C for longer. Avoid repeated freezing and thawing.
Stability:	Shelf life: one year from despatch.
Gene Name:	SLAM family member 8
Database Link:	Entrez Gene 56833 Human Q9P0V8



[View online »](#)

Background:

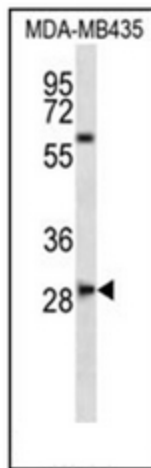
This gene encodes a member of the CD2 family of cell surface proteins involved in lymphocyte activation. These proteins are characterized by Ig domains. This protein is expressed in lymphoid tissues, and studies of a similar protein in mouse suggest that it may function during B cell lineage commitment. The gene is found in a region of chromosome 1 containing many CD2 genes.

Synonyms:

BLAME

Note:**Molecular Weight:** 31670 Da**Protein Families:**

Druggable Genome, Transmembrane

Product images:

Western blot analysis of SLAMF8 Antibody (C-term) in MDA-MB435 cell line lysates (35ug/lane). This demonstrates the SLAMF8 antibody detected the SLAMF8 protein (arrow).