

Product datasheet for **AP53926PU-N**

LY108 (SLAMF6) (C-term) Rabbit Polyclonal Antibody

Product data:

Product Type:	Primary Antibodies
Applications:	WB
Recommended Dilution:	ELISA: 1/1000. Western Blot: 1/100-1/500.
Reactivity:	Human
Host:	Rabbit
Isotype:	Ig
Clonality:	Polyclonal
Immunogen:	KLH conjugated synthetic peptide between 276-305 amino acids from the C-terminal region of Human SLAMF6
Specificity:	This antibody recognizes Human CD352 / SLAMF6 (C-term).
Formulation:	PBS State: Aff - Purified State: Liquid purified Ig fraction Preservative: 0.09% Sodium Azide
Concentration:	lot specific
Purification:	Affinity Chromatography on Protein A
Conjugation:	Unconjugated
Storage:	Store undiluted at 2-8°C for one month or (in aliquots) at -20°C for longer. Avoid repeated freezing and thawing.
Stability:	Shelf life: one year from despatch.
Gene Name:	SLAM family member 6
Database Link:	Entrez Gene 114836 Human Q96DU3



[View online »](#)

Background:

The protein encoded by this gene is a type I transmembrane protein, belonging to the CD2 subfamily of the immunoglobulin superfamily. This encoded protein is expressed on Natural killer (NK), T, and B lymphocytes. It undergoes tyrosine phosphorylation and associates with the Src homology 2 domain-containing protein (SH2D1A) as well as with SH2 domain-containing phosphatases (SHPs). It functions as a coreceptor in the process of NK cell activation. It can also mediate inhibitory signals in NK cells from X-linked lymphoproliferative patients. Alternative splicing results in multiple transcript variants encoding distinct isoforms.

Synonyms:

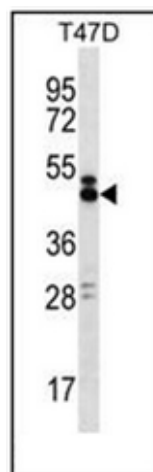
LY108, KALI, Activating NK receptor, NK-T-B-antigen, NTB-A

Note:

Molecular Weight: 37345 Da

Protein Families:

Druggable Genome, Transmembrane

Product images:

Western blot analysis of CD352 / SLAMF6 Antibody (C-term) in T47D cell line lysates (35ug/lane). This demonstrates the SLAMF6 antibody detected the SLAMF6 protein (arrow).