

Product datasheet for **AP53920PU-N**

SIT (SIT1) (C-term) Rabbit Polyclonal Antibody

Product data:

Product Type:	Primary Antibodies
Applications:	WB
Recommended Dilution:	ELISA: 1/1000. Western Blot: 1/100-1/500.
Reactivity:	Human
Host:	Rabbit
Isotype:	Ig
Clonality:	Polyclonal
Immunogen:	KLH conjugated synthetic peptide between 160-189 amino acids from the C-terminal region of Human SIT1
Specificity:	This antibody recognizes Human SIT1 / SIT (C-term).
Formulation:	PBS State: Aff - Purified State: Liquid purified Ig fraction Preservative: 0.09% Sodium Azide
Concentration:	lot specific
Purification:	Affinity Chromatography on Protein A
Conjugation:	Unconjugated
Storage:	Store undiluted at 2-8°C for one month or (in aliquots) at -20°C for longer. Avoid repeated freezing and thawing.
Stability:	Shelf life: one year from despatch.
Gene Name:	signaling threshold regulating transmembrane adaptor 1
Database Link:	Entrez Gene 27240 Human Q9Y3P8
Background:	Negatively regulates TCR (T-cell antigen receptor)-mediated signaling in T-cells. Involved in positive selection of T-cells.
Synonyms:	gp30/40; MGC125908; MGC125909; MGC125910; RP11-331F9.5; SIT

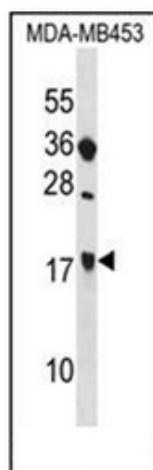


[View online »](#)

Note: **Molecular Weight:** 21126 Da

Protein Families: Transmembrane

Product images:



Western blot analysis of SIT1 / SIT Antibody (C-term) in MDA-MB453 cell line lysates (35ug/lane). This demonstrates the SIT1 antibody detected the SIT1 protein (arrow).