

## Product datasheet for **AP53919PU-N**

### SIRPG (Center) Rabbit Polyclonal Antibody

#### Product data:

Product Type:	Primary Antibodies
Applications:	WB
Recommended Dilution:	<b>ELISA:</b> 1/1000. <b>Western Blot:</b> 1/100-1/500.
Reactivity:	Human
Host:	Rabbit
Isotype:	Ig
Clonality:	Polyclonal
Immunogen:	KLH conjugated synthetic peptide between 192-221 amino acids from the Central region of Human SIRPG.
Specificity:	This antibody recognizes Human CD172g / SIRPG (Center).
Formulation:	PBS State: Aff - Purified State: Liquid purified Ig fraction Preservative: 0.09% Sodium Azide
Concentration:	lot specific
Purification:	Affinity Chromatography on Protein A
Conjugation:	Unconjugated
Gene Name:	signal regulatory protein gamma
Database Link:	<a href="#">Entrez Gene 55423 Human Q9P1W8</a>

#### Background:

The protein encoded by this gene is a member of the signal-regulatory protein (SIRP) family, and also belongs to the immunoglobulin superfamily. SIRP family members are receptor-type transmembrane glycoproteins known to be involved in the negative regulation of receptor tyrosine kinase-coupled signaling processes. Alternatively spliced transcript variants encoding different isoforms have been described.



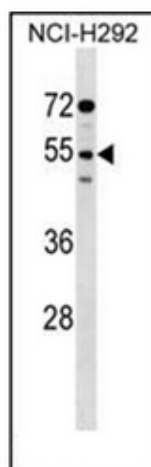
[View online »](#)

**Synonyms:** SIRP-beta-2, SIRP-b2, SIRPB2, SIRP gamma

**Note:** **Molecular Weight:** 42498 Da

**Protein Families:** Druggable Genome, Transmembrane

**Product images:**



Western blot analysis of D172g / SIRPG in NCI-H292 cell line lysates (35ug/lane). This demonstrates the SIRPG antibody detected the SIRPG protein (arrow).