

## Product datasheet for **AP53917PU-N**

### **SIGLEC5 (N-term) Rabbit Polyclonal Antibody**

#### **Product data:**

Product Type:	Primary Antibodies
Applications:	WB
Recommended Dilution:	<b>ELISA:</b> 1/1000. <b>Western Blot:</b> 1/100-1/500.
Reactivity:	Human
Host:	Rabbit
Isotype:	Ig
Clonality:	Polyclonal
Immunogen:	KLH conjugated synthetic peptide between 103-132 amino acids from the N-terminal region of Human SIGLEC5.
Specificity:	This antibody recognizes Human CD170 / SIGLEC5 (N-term).
Formulation:	PBS State: Aff - Purified State: Liquid purified Ig fraction Preservative: 0.09% Sodium Azide
Concentration:	lot specific
Purification:	Affinity Chromatography on Protein A
Conjugation:	Unconjugated
Storage:	Store undiluted at 2-8°C for one month or (in aliquots) at -20°C for longer. Avoid repeated freezing and thawing.
Stability:	Shelf life: one year from despatch.
Gene Name:	sialic acid binding Ig like lectin 5
Database Link:	<a href="#">Entrez Gene 8778 Human</a> <a href="#">O15389</a>



[View online »](#)

**Background:**

The sialic acid-binding immunoglobulin-like lectins (SIGLECs), such as SIGLEC5, are a subgroup of the immunoglobulin (Ig) superfamily that mediate protein-carbohydrate interactions. They specifically interact with sialic acids in glycoproteins and glycolipids, with each SIGLEC having a particular preference for both the nature of the sialic acid and its glycosidic linkage to adjacent sugars. SIGLECs have similar structures, including extracellular Ig-like domains composed of an N-terminal V-set domain followed by varying numbers of C2-set domains. It appears that all SIGLECs have an unusual arrangement of conserved cysteine residues in the V-set and adjacent C2-set domains. Most SIGLECs are expressed uniquely within the hematopoietic system (Cornish et al., 1998 [PubMed 9731071]).

**Synonyms:**

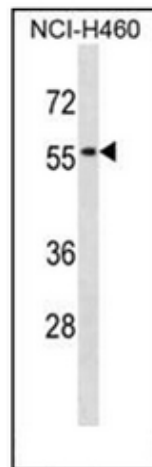
CD33L2, OBBP2, OB-binding protein 2, Siglec-5

**Note:**

**Molecular Weight:** 60715 Da

**Protein Families:**

Druggable Genome, Transmembrane

**Product images:**

Western blot analysis of CD170 / SIGLEC5 Antibody in NCI-H460 cell line lysates (35ug/lane). This demonstrates the SIGLEC5 antibody detected the SIGLEC5 protein (arrow).