

Product datasheet for **AP53915PU-N**

SIGLEC14 (N-term) Rabbit Polyclonal Antibody

Product data:

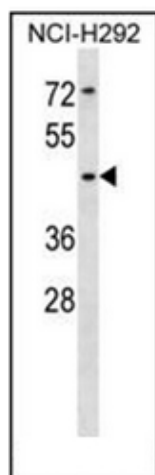
Product Type:	Primary Antibodies
Applications:	WB
Recommended Dilution:	ELISA: 1/1000. Western Blot: 1/100-1/500.
Reactivity:	Human
Host:	Rabbit
Isotype:	Ig
Clonality:	Polyclonal
Immunogen:	KLH conjugated synthetic peptide between 59-89 amino acids from the N-terminal region of Human SIGLEC14.
Specificity:	This antibody recognizes Human SIGLEC14 (N-term).
Formulation:	PBS State: Aff - Purified State: Liquid purified Ig fraction Preservative: 0.09% Sodium Azide
Concentration:	lot specific
Purification:	Affinity Chromatography on Protein A
Conjugation:	Unconjugated
Storage:	Store undiluted at 2-8°C for one month or (in aliquots) at -20°C for longer. Avoid repeated freezing and thawing.
Stability:	Shelf life: one year from despatch.
Gene Name:	sialic acid binding Ig like lectin 14
Database Link:	Entrez Gene 100049587 Human Q08ET2
Background:	Putative adhesion molecule. Sialic acid-binding paired receptor which may activate associated receptors.
Synonyms:	Sialic acid-binding Ig-like lectin 14



[View online »](#)

Note: **Molecular Weight:** 43970 Da

Product images:



Western blot analysis of SIGLEC14 Antibody (N-term) in NCI-H292 cell line lysates (35ug/lane). This demonstrates the SIGLEC14 antibody detected the SIGLEC14 protein (arrow).