

Product datasheet for **AP53913PU-N**

SIAH1 (Center) Rabbit Polyclonal Antibody

Product data:

Product Type:	Primary Antibodies
Applications:	WB
Recommended Dilution:	ELISA: 1/1000. Western Blot: 1/100-1/500.
Reactivity:	Human
Host:	Rabbit
Isotype:	Ig
Clonality:	Polyclonal
Immunogen:	KLH conjugated synthetic peptide between 91-121 amino acids from the Central region of human SIAH1.
Specificity:	This antibody recognizes
Formulation:	PBS State: Aff - Purified State: Liquid purified Ig fraction Preservative: 0.09% Sodium Azide
Concentration:	lot specific
Purification:	Affinity Chromatography on Protein A
Conjugation:	Unconjugated
Storage:	Store undiluted at 2-8°C for one month or (in aliquots) at -20°C for longer. Avoid repeated freezing and thawing.
Stability:	Shelf life: one year from despatch.
Gene Name:	siah E3 ubiquitin protein ligase 1
Database Link:	Entrez Gene 6477 Human Q8IUQ4



[View online »](#)

Background: SIAH1 is a protein that is a member of the seven in absentia homolog (SIAH) family. The protein is an E3 ligase and is involved in ubiquitination and proteasome-mediated degradation of specific proteins. The activity of this ubiquitin ligase has been implicated in the development of certain forms of Parkinson's disease, the regulation of the cellular response to hypoxia and induction of apoptosis. Alternative splicing results in several additional transcript variants, some encoding different isoforms and others that have not been fully characterized. [provided by RefSeq].

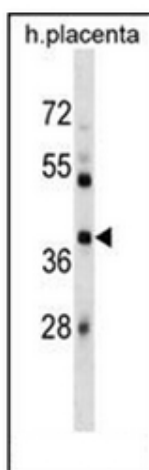
Synonyms: Siah-1, Siah-1a, HUMSIAH

Note: **Molecular Weight:** 31123 Da

Protein Families: Druggable Genome

Protein Pathways: p53 signaling pathway, Ubiquitin mediated proteolysis, Wnt signaling pathway

Product images:



Western blot analysis of SIAH1 Antibody (Center) in human placenta tissue lysates (35ug/lane). This demonstrates the SIAH1 antibody detected the SIAH1 protein (arrow).