

Product datasheet for **AP53912PU-N**

SHQ1 (N-term) Rabbit Polyclonal Antibody

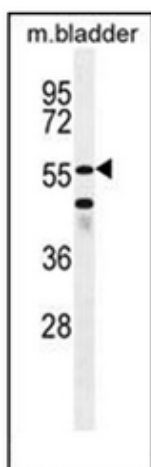
Product data:

Product Type:	Primary Antibodies
Applications:	IHC, WB
Recommended Dilution:	ELISA: 1/1000. Western Blot: 1/100-1/500. Immunohistochemistry on Paraffin Sections: 1/50-1/100.
Reactivity:	Human, Mouse
Host:	Rabbit
Isotype:	Ig
Clonality:	Polyclonal
Immunogen:	KLH conjugated synthetic peptide between 65-94 amino acids from the N-terminal region of Human SHQ1.
Specificity:	This antibody recognizes Mouse SHQ1 (N-term).
Formulation:	PBS State: Aff - Purified State: Liquid purified Ig fraction Preservative: 0.09% Sodium Azide
Concentration:	lot specific
Purification:	Affinity Chromatography on Protein A
Conjugation:	Unconjugated
Storage:	Store undiluted at 2-8°C for one month or (in aliquots) at -20°C for longer. Avoid repeated freezing and thawing.
Stability:	Shelf life: one year from despatch.
Gene Name:	SHQ1, H/ACA ribonucleoprotein assembly factor
Database Link:	Entrez Gene 72171 Mouse Entrez Gene 55164 Human Q6PI26
Synonyms:	Protein SHQ1 homolog
Note:	Molecular Weight: 65125 Da

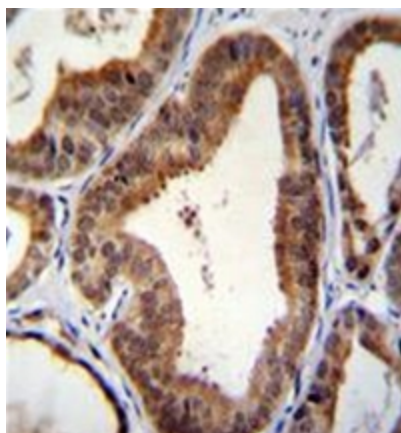


[View online »](#)

Product images:



Western blot analysis of SHQ1 Antibody (N-term) in Mouse bladder tissue lysates (35ug/lane). This demonstrates the SHQ1 antibody detected the SHQ1 protein (arrow).



Formalin fixed, paraffin embedded human prostate carcinoma stained with SHQ1 Antibody (N-term) followed by peroxidase conjugation of the secondary antibody and DAB staining.