

## Product datasheet for **AP53911PU-N**

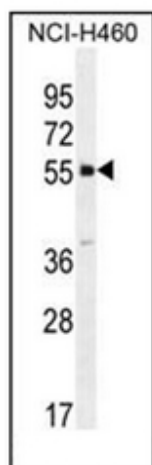
### SHISA6 (N-term) Rabbit Polyclonal Antibody

#### Product data:

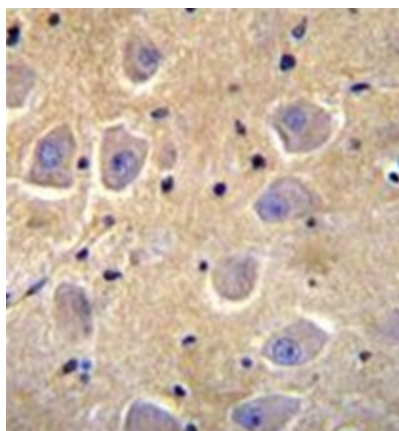
Product Type:	Primary Antibodies
Applications:	IHC, WB
Recommended Dilution:	<b>ELISA:</b> 1/1000. <b>Western Blot:</b> 1/100-1/500. <b>Immunohistochemistry on Paraffin Sections:</b> 1/50-1/100.
Reactivity:	Human
Host:	Rabbit
Isotype:	Ig
Clonality:	Polyclonal
Immunogen:	KLH conjugated synthetic peptide between 88-118 amino acids from the N-terminal region of Human SHISA6.
Specificity:	This antibody recognizes Human SHISA6 (N-term).
Formulation:	PBS State: Aff - Purified State: Liquid purified Ig fraction Preservative: 0.09% Sodium Azide
Concentration:	lot specific
Purification:	Affinity Chromatography on Protein A
Conjugation:	Unconjugated
Storage:	Store undiluted at 2-8°C for one month or (in aliquots) at -20°C for longer. Avoid repeated freezing and thawing.
Stability:	Shelf life: one year from despatch.
Gene Name:	shisa family member 6
Database Link:	<a href="#">Entrez Gene 388336 Human Q6ZSJ9</a>
Synonyms:	Protein shisa-6 homolog
Note:	<b>Molecular Weight:</b> 55764 Da



[View online »](#)

**Product images:**

Western blot analysis of SHISA6 Antibody (N-term) in NCI-H460 cell line lysates (35ug/lane). This demonstrates the SHISA6 antibody detected the SHISA6 protein (arrow).



Formalin fixed, paraffin embedded human brain tissue stained with SHISA6 Antibody (N-term) followed by peroxidase conjugation of the secondary antibody and DAB staining.