

Product datasheet for **AP53910PU-N**

SHISA3 (C-term) Rabbit Polyclonal Antibody

Product data:

Product Type:	Primary Antibodies
Applications:	IHC, WB
Recommended Dilution:	ELISA: 1/1000. Western Blot: 1/100-1/500. Immunohistochemistry on Paraffin Sections: 1/50-1/100.
Reactivity:	Human, Mouse
Host:	Rabbit
Isotype:	Ig
Clonality:	Polyclonal
Immunogen:	KLH conjugated synthetic peptide between 165-195 amino acids from the C-terminal region of Human SHISA3
Specificity:	This antibody recognizes Human SHISA3 (C-term).
Formulation:	PBS State: Aff - Purified State: Liquid purified Ig fraction Preservative: 0.09% Sodium Azide
Concentration:	lot specific
Purification:	Affinity Chromatography on Protein A
Conjugation:	Unconjugated
Storage:	Store undiluted at 2-8°C for one month or (in aliquots) at -20°C for longer. Avoid repeated freezing and thawing.
Stability:	Shelf life: one year from despatch.
Gene Name:	shisa family member 3
Database Link:	Entrez Gene 330096 Mouse Entrez Gene 152573 Human A0PIX4



[View online »](#)

Background:

SHISA3 plays an essential role in the maturation of presomitic mesoderm cells by individual attenuation of both FGF and WNT signaling (By similarity).

Synonyms:

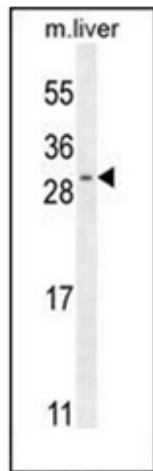
Protein shisa-3 homolog

Note:

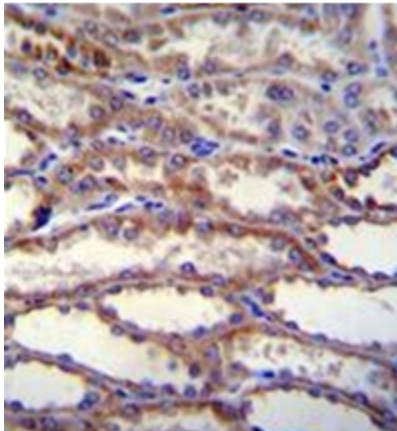
Molecular Weight: 25832 Da

Protein Families:

Transmembrane

Product images:

Western blot analysis of SHISA3 Antibody (C-term) in Mouse liver tissue lysates (35ug/lane). This demonstrates the SHISA3 antibody detected the SHISA3 protein (arrow).



Formalin fixed, paraffin embedded human kidney tissue stained with SHISA3 Antibody (C-term) followed by peroxidase conjugation of the secondary antibody and DAB staining.