

## Product datasheet for **AP53907PU-N**

### Sex Hormone Binding Globulin (SHBG) (N-term) Rabbit Polyclonal Antibody

#### Product data:

Product Type:	Primary Antibodies
Applications:	WB
Recommended Dilution:	<b>ELISA:</b> 1/1000. <b>Western Blot:</b> 1/1000.
Reactivity:	Human
Host:	Rabbit
Isotype:	Ig
Clonality:	Polyclonal
Immunogen:	KLH conjugated synthetic peptide between 69-96 amino acids from the N-terminal region of Human SHBG.
Specificity:	This antibody recognizes Human SHBG (N-term).
Formulation:	PBS State: Aff - Purified State: Liquid purified Ig fraction Preservative: 0.09% Sodium Azide
Concentration:	lot specific
Purification:	Affinity Chromatography on Protein A
Conjugation:	Unconjugated
Storage:	Store undiluted at 2-8°C for one month or (in aliquots) at -20°C for longer. Avoid repeated freezing and thawing.
Stability:	Shelf life: one year from despatch.
Gene Name:	sex hormone binding globulin
Database Link:	<a href="#">Entrez Gene 6462 Human P04278</a>



[View online »](#)

**Background:**

This gene encodes a steroid binding protein that was first described as a plasma protein secreted by the liver but is now thought to participate in the regulation of steroid responses. The encoded protein binds each steroid molecule as a dimer formed from identical or nearly identical monomers. The use of alternate promoters and alternatively spliced transcripts have been described. Multiple transcript variants encoding different isoforms have been found for this gene.

**Synonyms:**

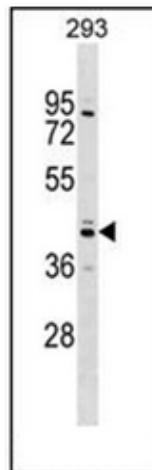
Sex hormone-binding globulin, SHBG, Sex steroid-binding protein, SBP, ABP, TeBG

**Note:**

**Molecular Weight:** 43779 Da

**Protein Families:**

Druggable Genome, Secreted Protein

**Product images:**

Western blot analysis of SHBG Antibody (N-term) in 293 cell line lysates (35ug/lane). This demonstrates the SHBG antibody detected the SHBG protein (arrow).