

Product datasheet for **AP53905PU-N**

SH3RF3 (C-term) Rabbit Polyclonal Antibody

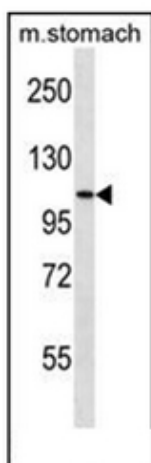
Product data:

Product Type:	Primary Antibodies
Applications:	WB
Recommended Dilution:	ELISA: 1/1000. Western Blot: 1/100-1/500.
Reactivity:	Human, Mouse
Host:	Rabbit
Isotype:	Ig
Clonality:	Polyclonal
Immunogen:	KLH conjugated synthetic peptide between 800-829 amino acids from the C-terminal region of Human SH3RF3.
Specificity:	This antibody recognizes Mouse SH3RF3 (C-term).
Formulation:	PBS State: Aff - Purified State: Liquid purified Ig fraction Preservative: 0.09% Sodium Azide
Concentration:	lot specific
Purification:	Affinity Chromatography on Protein A
Conjugation:	Unconjugated
Storage:	Store undiluted at 2-8°C for one month or (in aliquots) at -20°C for longer. Avoid repeated freezing and thawing.
Stability:	Shelf life: one year from despatch.
Gene Name:	SH3 domain containing ring finger 3
Database Link:	Entrez Gene 237353 Mouse Entrez Gene 344558 Human Q8TEJ3
Synonyms:	POSH2, SH3MD4
Note:	Molecular Weight: 92776 Da



[View online »](#)

Product images:



Western blot analysis of SH3RF3 Antibody (C-term) in mouse stomach tissue lysates (35ug/lane). This demonstrates the SH3RF3 antibody detected the SH3RF3 protein (arrow).