

## Product datasheet for **AP53904PU-N**

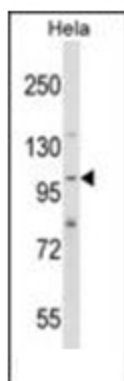
### **FISH (SH3PXD2A) (N-term) Rabbit Polyclonal Antibody**

#### **Product data:**

Product Type:	Primary Antibodies
Applications:	WB
Recommended Dilution:	<b>ELISA:</b> 1/1,000. <b>Western blotting:</b> 1/100-1/500.
Reactivity:	Human
Host:	Rabbit
Isotype:	Ig
Clonality:	Polyclonal
Immunogen:	KLH conjugated synthetic peptide between 221-250 amino acids from the N-terminal region of Human SH3PXD2A
Specificity:	Recognizes SH3PXD2A (N-term) .
Formulation:	PBS State: Aff - Purified State: Liquid purified Ig fraction Preservative: 0.09% (W/V) Sodium Azide
Concentration:	lot specific
Purification:	Protein A column followed by peptide Affinity purification
Conjugation:	Unconjugated
Gene Name:	SH3 and PX domains 2A
Database Link:	<a href="#">Entrez Gene 9644 Human Q5TCZ1</a>
Background:	SH3PXD2A is required for podosome formation, degradation of the extracellular matrix, and for the invasiveness of some cancer cells. Binds phosphatidylinositol 3-phosphate (PtdIns(3)P) and phosphatidylinositol 3,4-biphosphate (PtdIns(3,4)P2). In association with ADAM12, mediates the neurotoxic effect of beta-amyloid peptide.
Synonyms:	FISH, KIAA0418, SH3MD1, TKS5
Note:	<b>Molecular Weight:</b> 125289 Da



[View online »](#)

**Product images:**

Western blot analysis in HeLa cell line lysates (35ug/lane) using SH3PXD2A Antibody (N-term). This demonstrates the SH3PXD2A antibody detected the SH3PXD2A protein (arrow).