

Product datasheet for **AP53902PU-N**

SH3D20 (ARHGAP27) (Center) Rabbit Polyclonal Antibody

Product data:

Product Type:	Primary Antibodies
Applications:	WB
Recommended Dilution:	ELISA: 1/1,000. Western blotting: 1/100-1/500.
Reactivity:	Human
Host:	Rabbit
Isotype:	Ig
Clonality:	Polyclonal
Immunogen:	KLH conjugated synthetic peptide between 197-226 amino acids from the Central region of Human SH3D20
Specificity:	Recognizes SH3D20 (Center).
Formulation:	PBS with 0.09% (W/V) Sodium Azide as preservative State: Aff - Purified State: Liquid purified Ig fraction
Concentration:	lot specific
Purification:	Protein A column followed by peptide Affinity purification
Conjugation:	Unconjugated
Storage:	Store the antibody undiluted at 2-8°C for one month or (in aliquots) at -20°C for longer. Avoid repeated freezing and thawing.
Stability:	Shelf life: one year from despatch.
Gene Name:	Rho GTPase activating protein 27
Database Link:	Entrez Gene 201176 Human Q6ZUM4
Background:	SH3D20 is a rho GTPase-activating protein which may be involved in clathrin-mediated endocytosis. GTPase activators for the Rho-type GTPases act by converting them to an inactive GDP-bound state. Has activity toward CDC42 and RAC1 (By similarity).

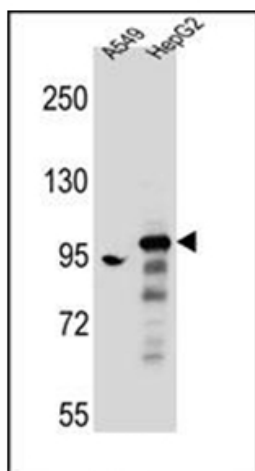


[View online »](#)

Synonyms: Rho GTPase-activating protein 27, CAMGAP1, SH3D20, CIN85-associated multi-domain-containing Rho GTPase-activating protein 1, Rho-type GTPase-activating protein 27, SH3 domain-containing protein 20

Note: **Molecular Weight:** 98396 Da

Product images:



Western blot analysis using SH3D20 Antibody (Center) (in A549, HepG2 cell line lysates (35ug/lane). This demonstrates the SH3D20 antibody detected the SH3D20 protein (arrow).