

Product datasheet for **AP53901PU-N**

SH3BP2 (Center) Rabbit Polyclonal Antibody

Product data:

Product Type:	Primary Antibodies
Applications:	WB
Recommended Dilution:	ELISA: 1/1,000. Western blotting: 1/100-1/500.
Reactivity:	Human, Mouse
Host:	Rabbit
Isotype:	Ig
Clonality:	Polyclonal
Immunogen:	KLH conjugated synthetic peptide between 150-180 amino acids from the Central region of Human SH3BP2
Specificity:	Recognizes SH3BP2 (Center).
Formulation:	PBS with 0.09% (W/V) Sodium Azide as preservative State: Aff - Purified State: Liquid purified Ig fraction
Concentration:	lot specific
Purification:	Protein A column followed by peptide Affinity purification
Conjugation:	Unconjugated
Storage:	Store the antibody undiluted at 2-8°C for one month or (in aliquots) at -20°C for longer. Avoid repeated freezing and thawing.
Stability:	Shelf life: one year from despatch.
Gene Name:	SH3 domain binding protein 2
Database Link:	Entrez Gene 24055 Mouse Entrez Gene 6452 Human P78314



[View online »](#)

Background: The protein encoded by this gene has an N-terminal pleckstrin homology (PH) domain, an SH3-binding proline-rich region, and a C-terminal SH2 domain. The protein binds to the SH3 domains of several proteins including the ABL1 and SYK protein tyrosine kinases, and functions as a cytoplasmic adaptor protein to positively regulate transcriptional activity in T, natural killer (NK), and basophilic cells. Mutations in this gene result in cherubism. Multiple transcript variants encoding different isoforms have been found for this gene.

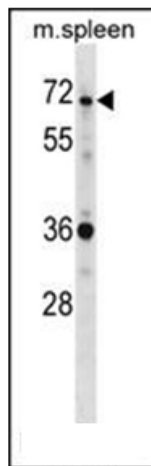
Synonyms: SH3 domain-binding protein 2, SH3BP-2, 3BP2, 3BP-2

Note: **Molecular Weight:** 62244 Da

Protein Families: Druggable Genome

Protein Pathways: Natural killer cell mediated cytotoxicity

Product images:



Western blot analysis using SH3BP2 Antibody (Center) in Mouse spleen tissue lysates (35ug/lane). This demonstrates the SH3BP2 antibody detected the SH3BP2 protein (arrow).