

Product datasheet for **AP53899PU-N**

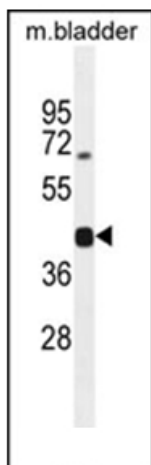
SH2D5 (Center) Rabbit Polyclonal Antibody

Product data:

Product Type:	Primary Antibodies
Applications:	WB
Recommended Dilution:	ELISA: 1/1,000. Western blotting: 1/100-1/500.
Reactivity:	Human, Mouse
Host:	Rabbit
Isotype:	Ig
Clonality:	Polyclonal
Immunogen:	KLH conjugated synthetic peptide between 113-142 amino acids from the Central region of Human SH2D5 (NP_001096630.1, NP_001096631.1).
Specificity:	Recognizes SH2D5 (Center).
Formulation:	PBS with 0.09% (W/V) Sodium Azide as preservative State: Aff - Purified State: Liquid purified Ig fraction
Concentration:	lot specific
Purification:	Protein A column followed by peptide Affinity purification
Conjugation:	Unconjugated
Storage:	Store the antibody undiluted at 2-8°C for one month or (in aliquots) at -20°C for longer. Avoid repeated freezing and thawing.
Stability:	Shelf life: one year from despatch.
Gene Name:	SH2 domain containing 5
Database Link:	Entrez Gene 230863 Mouse Entrez Gene 400745 Human Q6ZV89
Synonyms:	SH2 domain-containing protein 5
Note:	Molecular Weight: 37439 Da



[View online »](#)

Product images:

Western blot analysis using SH2D5 Antibody (Center) in Mouse bladder tissue lysates (35ug/lane). This demonstrates the SH2D5 antibody detected the SH2D5 protein (arrow).