

Product datasheet for **AP53898PU-N**

SH2D4B (C-term) Rabbit Polyclonal Antibody

Product data:

| | |
|-----------------------|---|
| Product Type: | Primary Antibodies |
| Applications: | IF, IHC, WB |
| Recommended Dilution: | ELISA: 1/1,000. Western blotting: 1/100-1/500. Immunofluorescence: 1/10-1/50. Immunohistochemistry: 1/10-1/50. |
| Reactivity: | Human |
| Host: | Rabbit |
| Isotype: | Ig |
| Clonality: | Polyclonal |
| Immunogen: | KLH conjugated synthetic peptide between 381-410 amino acids from the C-terminal region of Human SH2D4B |
| Specificity: | Recognizes SH2D4B (C-term) |
| Formulation: | PBS with 0.09% (W/V) Sodium Azide as preservative State: Aff - Purified State: Liquid purified Ig fraction |
| Concentration: | lot specific |
| Purification: | Protein A column followed by peptide Affinity purification |
| Conjugation: | Unconjugated |
| Storage: | Store the antibody undiluted at 2-8°C for one month or (in aliquots) at -20°C for longer. Avoid repeated freezing and thawing. |
| Stability: | Shelf life: one year from despatch. |
| Gene Name: | SH2 domain containing 4B |
| Database Link: | Entrez Gene 387694 Human Q5SQS7 |



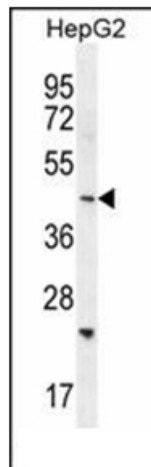
[View online »](#)

Background:

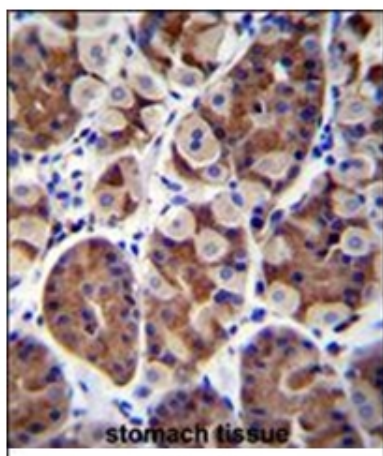
SH2D4B (SH2 domain containing 4B) is a 431 amino acid protein that contains one SH2 domain, exists as three alternatively spliced isoforms and is encoded by a gene that maps to human chromosome 10q23.1. Spanning nearly 135 million base pairs, chromosome 10 makes up approximately 4.5% of total DNA in cells and encodes nearly 1,200 genes. Several protein-coding genes, including those that encode for chemokines, cadherins, excision repair proteins, early growth response factors (Egrs) and fibroblast growth receptors (FGFRs), are located on chromosome 10. Defects in some of the genes that map to chromosome 10 are associated with Charcot-Marie Tooth disease, Jackson-Weiss syndrome, Usher syndrome, nonsyndromic deafness, Wolman's syndrome, Cowden syndrome, multiple endocrine neoplasia type 2 and porphyria.

Synonyms:

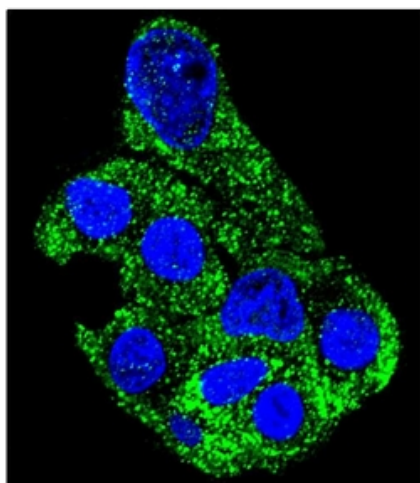
FLJ41984

Note:**Molecular Weight:** 51232 Da**Product images:**

Western blot analysis using SH2D4B Antibody (C-term) in HepG2 cell line lysates (35ug/lane). This demonstrates the SH2D4B antibody detected the SH2D4B protein (arrow).



Immunohistochemistry analysis in Formalin Fixed, Paraffin Embedded Human stomach tissue stained with SH2D4B Antibody (C-term) followed by peroxidase conjugation of the secondary antibody and DAB staining. This data demonstrates the use of SH2D4B Antibody (C-term) for immunohistochemistry. Clinical relevance has not been evaluated.



Confocal Immunofluorescent analysis of SH2D4B Antibody (C-term) with HepG2 cell followed by Alexa Fluor 488-conjugated Goat anti-Rabbit IgG (green). DAPI was used to stain the cell nuclear (blue).