

Product datasheet for **AP53897PU-N**

SH2D4A (N-term) Rabbit Polyclonal Antibody

Product data:

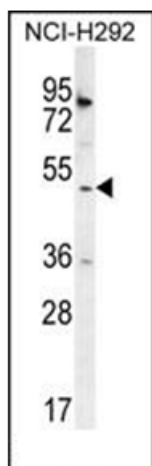
Product Type:	Primary Antibodies
Applications:	IHC, WB
Recommended Dilution:	ELISA: 1/1,000. Western blotting: 1/100-1/500. Immunohistochemistry: 1/10-1/50.
Reactivity:	Human
Host:	Rabbit
Isotype:	Ig
Clonality:	Polyclonal
Immunogen:	KLH conjugated synthetic peptide between 45-75 amino acids from the N-terminal region of Human SH2D4A
Specificity:	Recognizes SH2D4A (N-term).
Formulation:	PBS with 0.09% (W/V) Sodium Azide as preservative State: Aff - Purified State: Liquid purified Ig fraction
Concentration:	lot specific
Purification:	Protein A column followed by peptide Affinity purification
Conjugation:	Unconjugated
Storage:	Store the antibody undiluted at 2-8°C for one month or (in aliquots) at -20°C for longer. Avoid repeated freezing and thawing.
Stability:	Shelf life: one year from despatch.
Gene Name:	SH2 domain containing 4A
Database Link:	Entrez Gene 63898 Human Q9H788
Background:	SH2D4A inhibits estrogen-induced cell proliferation by competing with PLCG for binding to ESR1, blocking the effect of estrogen on PLCG and repressing estrogen-induced proliferation. May play a role in T-cell development and function.
Synonyms:	SH2A



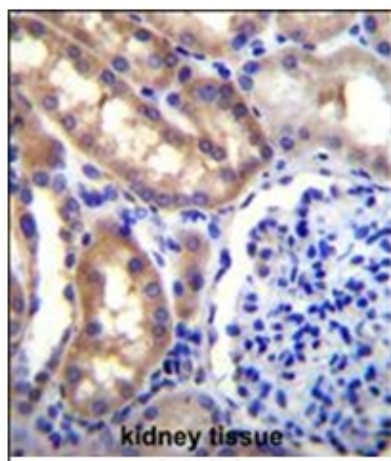
[View online »](#)

Note: **Molecular Weight:** 52727 Da

Product images:



Western blot analysis using SH2D4A Antibody (N-term) in NCI-H292 cell line lysates (35ug/lane). This demonstrates the SH2D4A antibody detected the SH2D4A protein (arrow).



Immunohistochemistry analysis in Formalin Fixed, Paraffin Embedded Human kidney tissue stained with SH2D4A Antibody (N-term) followed by peroxidase conjugation of the secondary antibody and DAB staining. This data demonstrates the use of SH2D4A Antibody (N-term) for immunohistochemistry. Clinical relevance has not been evaluated.