

Product datasheet for **AP53895PU-N**

SH2B1 (C-term) Rabbit Polyclonal Antibody

Product data:

Product Type:	Primary Antibodies
Applications:	WB
Recommended Dilution:	ELISA: 1/1,000. Western blotting: 1/100-1/500.
Reactivity:	Human
Host:	Rabbit
Isotype:	Ig
Clonality:	Polyclonal
Immunogen:	KLH conjugated synthetic peptide between 724-752 amino acids from the C-terminal region of Human SH2B1
Specificity:	Recognizes SH2B1 (C-term)
Formulation:	PBS with 0.09% (W/V) Sodium Azide as preservative State: Aff - Purified State: Liquid purified Ig fraction
Concentration:	lot specific
Purification:	Protein A column followed by peptide Affinity purification
Conjugation:	Unconjugated
Storage:	Store the antibody undiluted at 2-8°C for one month or (in aliquots) at -20°C for longer. Avoid repeated freezing and thawing.
Stability:	Shelf life: one year from despatch.
Gene Name:	SH2B adaptor protein 1
Database Link:	Entrez Gene 25970 Human Q9NRF2
Background:	This gene encodes a member of the SH2-domain containing mediators family. The encoded protein mediates activation of various kinases and may function in cytokine and growth factor receptor signaling and cellular transformation. Alternatively spliced transcript variants have been described. [provided by RefSeq].
Synonyms:	SH2B adapter protein 1, KIAA1299

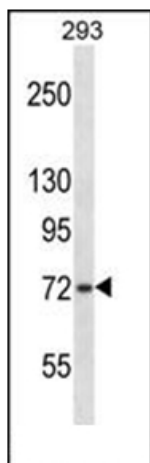


[View online »](#)

Note: **Molecular Weight:** 79366 Da

Protein Pathways: Neurotrophin signaling pathway

Product images:



Western blot analysis using SH2B1 Antibody (C-term) in 293 cell line lysates (35ug/lane). This demonstrates the SH2B1 antibody detected the SH2B1 protein (arrow).