

Product datasheet for **AP53892PU-N**

SGSH (C-term) Rabbit Polyclonal Antibody

Product data:

Product Type:	Primary Antibodies
Applications:	WB
Recommended Dilution:	ELISA: 1/1,000. Western blotting: 1/100-1/500.
Reactivity:	Human
Host:	Rabbit
Isotype:	Ig
Clonality:	Polyclonal
Immunogen:	KLH conjugated synthetic peptide between 427~457 amino acids from the C-terminal region of Human SGSH.
Specificity:	Recognizes Sulphamidase / SGSH (C-term).
Formulation:	PBS with 0.09% (W/V) Sodium Azide as preservative State: Aff - Purified State: Liquid purified Ig fraction
Concentration:	lot specific
Purification:	Protein A column followed by peptide Affinity purification
Conjugation:	Unconjugated
Storage:	Store the antibody undiluted at 2-8°C for one month or (in aliquots) at -20°C for longer. Avoid repeated freezing and thawing.
Stability:	Shelf life: one year from despatch.
Gene Name:	N-sulfoglucosamine sulfohydrolase
Database Link:	Entrez Gene 6448 Human P51688
Background:	SGSH is one of several enzymes involved in the lysosomal degradation of heparan sulfate. Mutations in this gene are associated with Sanfilippo syndrome A, one type of the lysosomal storage disease mucopolysaccharidosis III, which results from impaired degradation of heparan sulfate. Transcripts of varying sizes have been reported but their biological validity has not been determined.



[View online »](#)

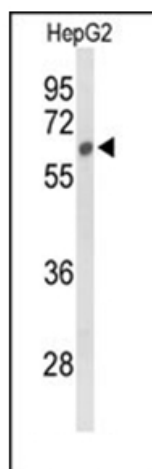
Synonyms: Sulfoglucosamine sulfamidase, HSS

Note: **Molecular Weight:** 56695 Da

Protein Families: Druggable Genome

Protein Pathways: Glycosaminoglycan degradation, Lysosome, Metabolic pathways

Product images:



Western blot analysis of SGSH Antibody (C-Term) in HepG2 cell line lysates (35ug/lane). SGSH (arrow) was detected using the purified Pab.