

Product datasheet for **AP53891PU-N**

SGPL1 (N-term) Rabbit Polyclonal Antibody

Product data:

Product Type:	Primary Antibodies
Applications:	IHC, WB
Recommended Dilution:	Western blotting: 1/1000. Immunohistochemistry: 1/10-1/50.
Reactivity:	Human
Host:	Rabbit
Isotype:	Ig
Clonality:	Polyclonal
Immunogen:	KLH conjugated synthetic peptide between 72-101 amino acids from the N-terminal region of Human SGPL1.
Specificity:	Recognizes SGPL1 (N-term).
Formulation:	PBS with 0.09% (W/V) Sodium Azide as preservative State: Aff - Purified State: Liquid purified Ig fraction
Concentration:	lot specific
Purification:	Protein A column followed by peptide Affinity purification
Conjugation:	Unconjugated
Storage:	Store the antibody undiluted at 2-8°C for one month or (in aliquots) at -20°C for longer. Avoid repeated freezing and thawing.
Stability:	Shelf life: one year from despatch.
Gene Name:	sphingosine-1-phosphate lyase 1
Database Link:	Entrez Gene 8879 Human O95470
Background:	SGPL1 cleaves phosphorylated sphingoid bases (PSBs), such as sphingosine-1-phosphate, into fatty aldehydes and phosphoethanolamine. Elevates stress-induced ceramide production and apoptosis.
Synonyms:	SP-lyase 1, SPL 1, Sphingosine-1-phosphate aldolase, Sphingosine-1-phosphate lyase 1, KIAA1252



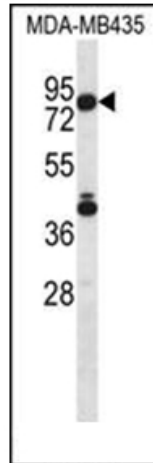
[View online »](#)

Note: **Molecular Weight:** 63524 Da

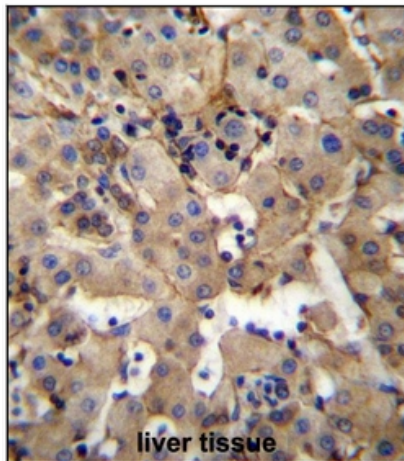
Protein Families: Druggable Genome

Protein Pathways: Metabolic pathways, Sphingolipid metabolism

Product images:



Western blot analysis using SGPL1 Antibody (N-term) in MDA-MB435 cell line lysates (35ug/lane). This demonstrates the SGPL1 antibody detected the SGPL1 protein (arrow).



Immunohistochemistry analysis in Formalin Fixed, Paraffin Embedded Human liver tissue stained with SGPL1 Antibody (N-term) followed by peroxidase conjugation of the secondary antibody and DAB staining. This data demonstrates the use of SGPL1 Antibody (N-term) for immunohistochemistry. Clinical relevance has not been evaluated.