

Product datasheet for **AP53888PU-N**

SGIP1 (N-term) Rabbit Polyclonal Antibody

Product data:

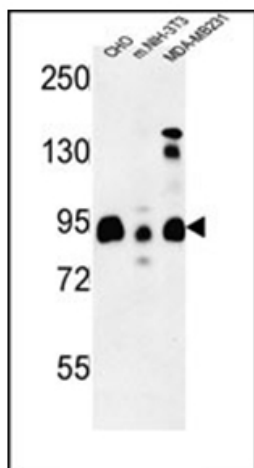
Product Type:	Primary Antibodies
Applications:	WB
Recommended Dilution:	ELISA: 1/1,000. Western blotting: 1/100-1/500.
Reactivity:	Human, Mouse
Host:	Rabbit
Isotype:	Ig
Clonality:	Polyclonal
Immunogen:	KLH conjugated synthetic peptide between 1~30 amino acids from the N-terminal region of Human SGIP1
Specificity:	Recognizes SGIP1 Antibody (N-term).
Formulation:	PBS with 0.09% (W/V) Sodium Azide as preservative State: Aff - Purified State: Liquid purified Ig fraction
Concentration:	lot specific
Purification:	Protein A column followed by peptide Affinity purification
Conjugation:	Unconjugated
Storage:	Store undiluted at 2-8°C for one month or (in aliquots) at -20°C for longer. Avoid repeated freezing and thawing.
Stability:	Shelf life: one year from despatch.
Gene Name:	SH3 domain GRB2 like endophilin interacting protein 1
Database Link:	Entrez Gene 84251 Human Q9BQI5
Background:	SGIP1 functions as an endocytic protein that affects signaling by receptors in neuronal systems involved in energy homeostasis via its interaction with endophilins (see SH3GL3; MIM 603362) (Trevaskis et al., 2005 [PubMed 15919751] and Uezu et al., 2007 [PubMed 17626015])
Synonyms:	Endophilin-3-interacting protein



[View online »](#)

Note: **Molecular Weight:** 89109 Da

Product images:



Western blot analysis using SGIP1 Antibody (N-term) in CHO, MDA-MB231, Mouse NIH-3T3 cell line lysates (35ug/lane). This demonstrates the SGIP1 antibody detected the SGIP1 protein (arrow).