

## Product datasheet for **AP53887PU-N**

### delta Sarcoglycan (SGCD) (C-term) Rabbit Polyclonal Antibody

#### Product data:

Product Type:	Primary Antibodies
Applications:	WB
Recommended Dilution:	ELISA: 1/1,000. Western blotting: 1/100-1/500.
Reactivity:	Human, Mouse
Host:	Rabbit
Isotype:	Ig
Clonality:	Polyclonal
Immunogen:	KLH conjugated synthetic peptide between 231-261 amino acids from the C-terminal region of Human SGCD (NP_001121681.1, NP_000328.2, NP_758447.1)
Specificity:	Recognizes SGCD (C-term).
Formulation:	PBS with 0.09% (W/V) Sodium Azide as preservative State: Aff - Purified State: Liquid purified Ig fraction
Concentration:	lot specific
Purification:	Protein A column followed by peptide Affinity purification
Conjugation:	Unconjugated
Storage:	Store the antibody undiluted at 2-8°C for one month or (in aliquots) at -20°C for longer. Avoid repeated freezing and thawing.
Stability:	Shelf life: one year from despatch.
Gene Name:	sarcoglycan delta
Database Link:	<a href="#">Entrez Gene 6444 Human Q92629</a>



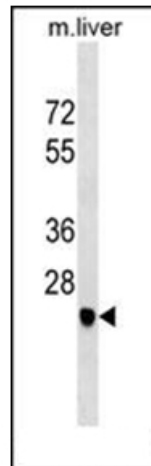
[View online »](#)

**Background:**

The protein encoded by this gene is one of the four known components of the sarcoglycan complex, which is a subcomplex of the dystrophin-glycoprotein complex (DGC). DGC forms a link between the F-actin cytoskeleton and the extracellular matrix. This protein is expressed most abundantly in skeletal and cardiac muscle. Mutations in this gene have been associated with autosomal recessive limb-girdle muscular dystrophy and dilated cardiomyopathy. Alternatively spliced transcript variants encoding distinct isoforms have been observed for this gene.

**Synonyms:**

SGCD, 35DAG

**Note:****Molecular Weight:** 32071 Da**Product images:**

Western blot analysis using SGCD Antibody (C-term) in Mouse liver tissue lysates (35ug/lane). This demonstrates the SGCD antibody detected the SGCD protein (arrow).