

Product datasheet for **AP53886PU-N**

SFTPC (N-term) Rabbit Polyclonal Antibody

Product data:

Product Type:	Primary Antibodies
Applications:	FC, IF, WB
Recommended Dilution:	Flow Cytometry: 1/25. Western blotting: 1/1000. Immunofluorescence: 1/25.
Reactivity:	Bovine, Human, Mouse
Host:	Rabbit
Isotype:	Ig
Clonality:	Polyclonal
Immunogen:	KLH conjugated synthetic peptide between 1-30 amino acids from the N-terminal region of Human SFTPC.
Specificity:	Recognizes SFTPC (N-term).
Formulation:	PBS with 0.09% (W/V) Sodium Azide as preservative State: Aff - Purified State: Liquid purified Ig fraction
Concentration:	lot specific
Purification:	Protein A column followed by peptide Affinity purification
Conjugation:	Unconjugated
Storage:	Store the antibody undiluted at 2-8°C for one month or (in aliquots) at -20°C for longer. Avoid repeated freezing and thawing.
Stability:	Shelf life: one year from despatch.
Gene Name:	surfactant protein C
Database Link:	Entrez Gene 20389 Mouse Entrez Gene 6440 Human P11686



[View online »](#)

Background:

This gene encodes the pulmonary-associated surfactant protein C (SPC), an extremely hydrophobic surfactant protein essential for lung function and homeostasis after birth. Pulmonary surfactant is a surface-active lipoprotein complex composed of 90% lipids and 10% proteins which include plasma proteins and apolipoproteins SPA, SPB, SPC and SPD. The surfactant is secreted by the alveolar cells of the lung and maintains the stability of pulmonary tissue by reducing the surface tension of fluids that coat the lung. Multiple mutations in this gene have been identified, which cause pulmonary surfactant metabolism dysfunction type 2, also called pulmonary alveolar proteinosis due to surfactant protein C deficiency, and are associated with interstitial lung disease in older infants, children, and adults. Alternatively spliced transcript variants encoding different protein isoforms have been identified.

Synonyms:

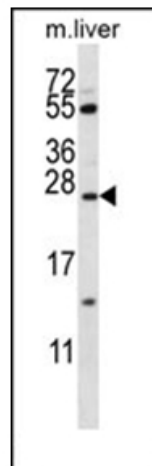
Surfactant protein C, SP-C, SFTP2, SP5

Note:

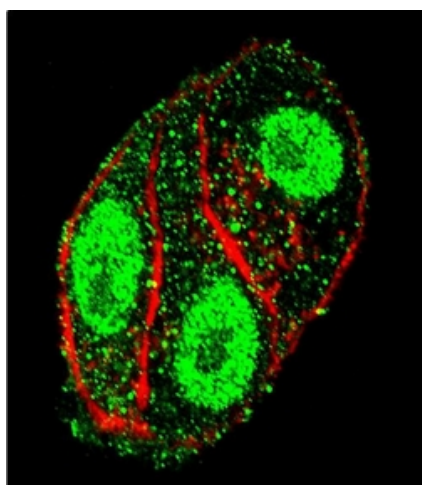
Molecular Weight: 21053 Da

Protein Families:

Secreted Protein, Transmembrane

Product images:


Western blot analysis using SFTPC Antibody (N-term) in Mouse liver tissue lysates (35 ug/lane). This demonstrates the SFTPC antibody detected the SFTPC protein (arrow).



Confocal Immunofluorescent analysis of SFTPC Antibody (N-term) with HepG2 cell followed by Alexa Fluor 488-conjugated Goat anti-Rabbit IgG (green). Actin filaments have been labeled with Alexa Fluor 555 phalloidin (red).