

## Product datasheet for **AP53884PU-N**

### SFTPA2 (C-term) Rabbit Polyclonal Antibody

#### Product data:

Product Type:	Primary Antibodies
Applications:	WB
Recommended Dilution:	Western blotting: 1/1000.
Reactivity:	Human
Host:	Rabbit
Isotype:	Ig
Clonality:	Polyclonal
Immunogen:	KLH conjugated synthetic peptide between 174-202 amino acids from the C-terminal region of Human SFTPA2B
Specificity:	Recognizes SFTPA2B (C-term).
Formulation:	PBS with 0.09% (W/V) Sodium Azide as preservative State: Aff - Purified State: Liquid purified Ig fraction
Concentration:	lot specific
Purification:	Protein A column followed by peptide Affinity purification
Conjugation:	Unconjugated
Storage:	Store the antibody undiluted at 2-8°C for one month or (in aliquots) at -20°C for longer. Avoid repeated freezing and thawing.
Stability:	Shelf life: one year from despatch.
Gene Name:	surfactant protein A2
Database Link:	<a href="#">Entrez Gene 729238 Human Q8IWL1</a>
Background:	This gene is one of several genes encoding pulmonary-surfactant associated proteins (SFTPA) located on chromosome 10. Mutations in this gene and a highly similar gene located nearby, which affect the highly conserved carbohydrate recognition domain, are associated with idiopathic pulmonary fibrosis. The current version of the assembly displays only a single centromeric SFTPA gene pair rather than the two gene pairs shown in the previous assembly which were thought to have resulted from a duplication.

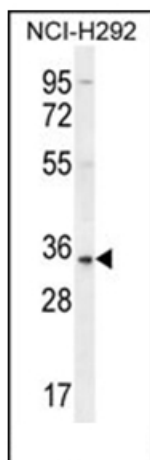


[View online »](#)

**Synonyms:** SFTPA2, Pulmonary surfactant-associated protein A2, COLEC5, PSAP, SFTP1, SFTPA

**Note:** **Molecular Weight:** 26182 Da

**Product images:**



Western blot analysis using SFTPA2B Antibody (C-term) in NCI-H292 cell line lysates (35ug/lane). This demonstrates the SFTPA2B antibody detected the SFTPA2B protein (arrow).