

Product datasheet for **AP53883PU-N**

SFT2B (SFT2D2) (N-term) Rabbit Polyclonal Antibody

Product data:

Product Type:	Primary Antibodies
Applications:	WB
Recommended Dilution:	ELISA: 1/1,000. Western blotting: 1/100-1/500.
Reactivity:	Human
Host:	Rabbit
Isotype:	Ig
Clonality:	Polyclonal
Immunogen:	KLH conjugated synthetic peptide between 1-30 amino acids from the N-terminal region of Human SFT2D2
Specificity:	Recognizes SFT2D2 (N-term).
Formulation:	PBS with 0.09% (W/V) Sodium Azide as preservative State: Aff - Purified State: Liquid purified Ig fraction
Concentration:	lot specific
Purification:	Protein A column followed by peptide Affinity purification
Conjugation:	Unconjugated
Storage:	Store the antibody undiluted at 2-8°C for one month or (in aliquots) at -20°C for longer. Avoid repeated freezing and thawing.
Stability:	Shelf life: one year from despatch.
Gene Name:	SFT2 domain containing 2
Database Link:	Entrez Gene 375035 Human O95562
Background:	PA2 catalyzes the calcium-dependent hydrolysis of the 2-acyl groups in 3-sn-phosphoglycerides. L-alpha-1-palmitoyl-2-linoleoyl phosphatidylethanolamine is more efficiently hydrolyzed than the other phospholipids examined.
Synonyms:	dj747L4.C1.2; FLJ34085; UNQ512

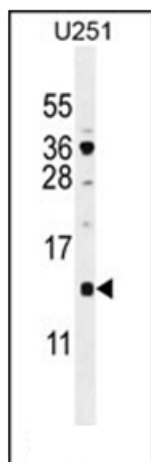


[View online »](#)

Note: **Molecular Weight:** 17779 Da

Protein Families: Transmembrane

Product images:



Western blot analysis using SFT2D2 Antibody (N-term) in U251 cell line lysates (35ug/lane). This demonstrates the SFT2D2 antibody detected the SFT2D2 protein (arrow).