

Product datasheet for **AP53882PU-N**

SFRS8 (SFSWAP) (N-term) Rabbit Polyclonal Antibody

Product data:

Product Type:	Primary Antibodies
Applications:	WB
Recommended Dilution:	ELISA: 1/1,000. Western blotting: 1/100-1/500.
Reactivity:	Human
Host:	Rabbit
Isotype:	Ig
Clonality:	Polyclonal
Immunogen:	KLH conjugated synthetic peptide between 1-30 amino acids from the N-terminal region of Human SFRS8
Specificity:	Recognizes SFRS8 (N-term).
Formulation:	PBS with 0.09% (W/V) Sodium Azide as preservative State: Aff - Purified State: Liquid purified Ig fraction
Concentration:	lot specific
Purification:	Protein A column followed by peptide Affinity purification
Conjugation:	Unconjugated
Storage:	Store the antibody undiluted at 2-8°C for one month or (in aliquots) at -20°C for longer. Avoid repeated freezing and thawing.
Stability:	Shelf life: one year from despatch.
Gene Name:	Homo sapiens splicing factor SWAP homolog (SFSWAP), transcript variant 2
Database Link:	Entrez Gene 6433 Human Q12872
Background:	This gene encodes a human homolog of Drosophila splicing regulatory protein. This gene autoregulates its expression by control of splicing of its first two introns. In addition, it also regulates the splicing of fibronectin and CD45 genes.
Synonyms:	1190005N23Rik; 6330437E22Rik; AI197402; AW212079; Sfrs8; Srsf8; SWAP

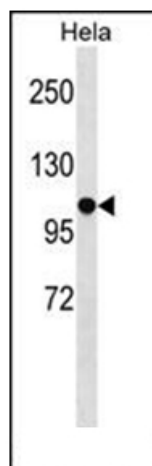


[View online »](#)

Note: **Molecular Weight:** 104822 Da

Protein Families: Transcription Factors

Product images:



Western blot analysis using SFRS8 Antibody (N-term) in HeLa cell line lysates (35ug/lane). This demonstrates the SFRS8 antibody detected the SFRS8 protein (arrow).