

## Product datasheet for **AP53880PU-N**

### **SFRS3 (SRSF3) (Center) Rabbit Polyclonal Antibody**

#### **Product data:**

<b>Product Type:</b>	Primary Antibodies
<b>Applications:</b>	WB
<b>Recommended Dilution:</b>	ELISA: 1/1,000. Western blotting: 1/100-1/500.
<b>Reactivity:</b>	Human
<b>Host:</b>	Rabbit
<b>Isotype:</b>	Ig
<b>Clonality:</b>	Polyclonal
<b>Immunogen:</b>	KLH conjugated synthetic peptide between 81-110 amino acids from the Central region of Human SFRS3
<b>Specificity:</b>	Recognizes SFRS3 (Center).
<b>Formulation:</b>	PBS with 0.09% (W/V) Sodium Azide as preservative State: Aff - Purified State: Liquid purified Ig fraction
<b>Concentration:</b>	lot specific
<b>Purification:</b>	Protein A column followed by peptide Affinity purification
<b>Conjugation:</b>	Unconjugated
<b>Storage:</b>	Store the antibody undiluted at 2-8°C for one month or (in aliquots) at -20°C for longer. Avoid repeated freezing and thawing.
<b>Stability:</b>	Shelf life: one year from despatch.
<b>Gene Name:</b>	serine/arginine-rich splicing factor 3
<b>Database Link:</b>	<a href="#">Entrez Gene 6428 Human P84103</a>



[View online »](#)

**Background:**

SFRS3 is a member of the serine/arginine (SR)-rich family of pre-mRNA splicing factors, which constitute part of the spliceosome. Each of these factors contains an RNA recognition motif (RRM) for binding RNA and an RS domain for binding other proteins. The RS domain is rich in serine and arginine residues and facilitates interaction between different SR splicing factors. In addition to being critical for mRNA splicing, the SR proteins have also been shown to be involved in mRNA export from the nucleus and in translation. Two transcript variants, one protein-coding and the other non-coding, have been found for this gene.

**Synonyms:**

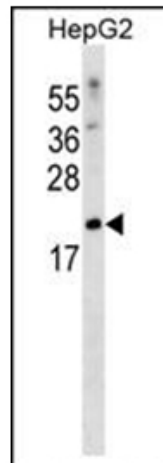
SRP20

**Note:****Molecular Weight:** 19330 Da**Protein Families:**

Stem cell - Pluripotency

**Protein Pathways:**

Spliceosome

**Product images:**

Western blot analysis using SFRS3 Antibody (Center) in HepG2 cell line lysates (35ug/lane). This demonstrates the SFRS3 antibody detected the SFRS3 protein (arrow).