

## Product datasheet for **AP53877PU-N**

### SFRS11 (SRSF11) (C-term) Rabbit Polyclonal Antibody

#### Product data:

Product Type:	Primary Antibodies
Applications:	WB
Recommended Dilution:	ELISA: 1/1,000. Western blotting: 1/100-1/500.
Reactivity:	Human
Host:	Rabbit
Isotype:	Ig
Clonality:	Polyclonal
Immunogen:	KLH conjugated synthetic peptide between 365-395 amino acids from the C-terminal region of Human SFRS11
Specificity:	Recognizes SFRS11 (C-term).
Formulation:	PBS with 0.09% (W/V) Sodium Azide as preservative State: Aff - Purified State: Liquid purified Ig fraction
Concentration:	lot specific
Purification:	Protein A column followed by peptide Affinity purification
Conjugation:	Unconjugated
Storage:	Store the antibody undiluted at 2-8°C for one month or (in aliquots) at -20°C for longer. Avoid repeated freezing and thawing.
Stability:	Shelf life: one year from despatch.
Gene Name:	serine/arginine-rich splicing factor 11
Database Link:	<a href="#">Entrez Gene 9295 Human Q05519</a>



[View online »](#)

**Background:**

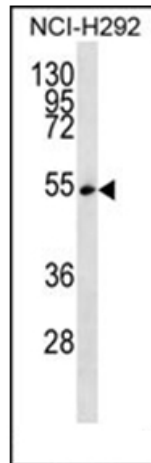
This gene encodes 54-kD nuclear protein that contains an arginine/serine-rich region similar to segments found in pre-mRNA splicing factors. Although the function of this protein is not yet known, structure and immunolocalization data suggest that it may play a role in pre-mRNA processing. Alternative splicing results in multiple transcript variants encoding different proteins. In addition, a pseudogene of this gene has been found on chromosome 12.

**Synonyms:**

0610009J05Rik; 2610019N13Rik; BF642805; Sfrs11

**Note:**

**Molecular Weight:** 53542 Da

**Product images:**

Western blot analysis using SFRS11 Antibody (C-term) in NCI-H292 cell line lysates (35ug/lane). This demonstrates the SFRS11 antibody detected the SFRS11 protein (arrow).