

Product datasheet for **AP53875PU-N**

SFRP4 (C-term) Rabbit Polyclonal Antibody

Product data:

Product Type:	Primary Antibodies
Applications:	WB
Recommended Dilution:	ELISA: 1/1,000. Western blotting: 1/100-1/500.
Reactivity:	Human
Host:	Rabbit
Isotype:	Ig
Clonality:	Polyclonal
Immunogen:	KLH conjugated synthetic peptide between 325-354 amino acids from the C-terminal region of Human SFRP4
Specificity:	Recognizes SFRP4 (C-term).
Formulation:	PBS with 0.09% (W/V) Sodium Azide as preservative State: Aff - Purified State: Liquid purified Ig fraction
Concentration:	lot specific
Purification:	Protein A column followed by peptide Affinity purification
Conjugation:	Unconjugated
Storage:	Store the antibody undiluted at 2-8°C for one month or (in aliquots) at -20°C for longer. Avoid repeated freezing and thawing.
Stability:	Shelf life: one year from despatch.
Gene Name:	secreted frizzled related protein 4
Database Link:	Entrez Gene 6424 Human Q6FHJ7
Background:	Secreted frizzled-related protein 4 (SFRP4) is a member of the SFRP family that contains a cysteine-rich domain homologous to the putative Wnt-binding site of Frizzled proteins. SFRPs act as soluble modulators of Wnt signaling. The expression of SFRP4 in ventricular myocardium correlates with apoptosis related gene expression.
Synonyms:	SFRP-4, FRPHE, FRP4



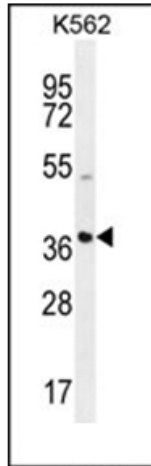
[View online »](#)

Note: **Molecular Weight:** 39827 Da

Protein Families: Adult stem cells, Cancer stem cells, Druggable Genome, ES Cell Differentiation/IPS, Secreted Protein, Stem cell relevant signaling - Wnt Signaling pathway

Protein Pathways: Wnt signaling pathway

Product images:



Western blot analysis using SFRP4 Antibody (C-term) in K562 cell line lysates (35ug/lane). is demonstrates the SFRP4 antibody detected the SFRP4 protein (arrow).