

Product datasheet for **AP53873PU-N**

SFRP1 (N-term) Rabbit Polyclonal Antibody

Product data:

Product Type:	Primary Antibodies
Applications:	FC, IHC, WB
Recommended Dilution:	ELISA: 1/1,000. Western blotting: 1/100-1/500. Flow Cytometry: 1/10-1/50. Immunohistochemistry: 1/50-1/100.
Reactivity:	Human
Host:	Rabbit
Isotype:	Ig
Clonality:	Polyclonal
Immunogen:	KLH conjugated synthetic peptide between 33~63 amino acids from the N-terminal region of Human SFRP1.
Specificity:	Recognizes SFRP1 (N-term).
Formulation:	PBS with 0.09% (W/V) Sodium Azide as preservative State: Aff - Purified State: Liquid purified Ig fraction
Concentration:	lot specific
Purification:	Protein A column followed by peptide Affinity purification
Conjugation:	Unconjugated
Storage:	Store the antibody undiluted at 2-8°C for one month or (in aliquots) at -20°C for longer. Avoid repeated freezing and thawing.
Stability:	Shelf life: one year from despatch.
Gene Name:	secreted frizzled related protein 1
Database Link:	Entrez Gene 6422 Human Q8N474



[View online »](#)

Background: SFRP1 encodes a member of the SFRP family that contains a cysteine-rich domain homologous to the putative Wnt-binding site of Frizzled proteins. Members of this family act as soluble modulators of Wnt signaling; epigenetic silencing of SFRP genes leads to deregulated activation of the Wnt-pathway which is associated with cancer.

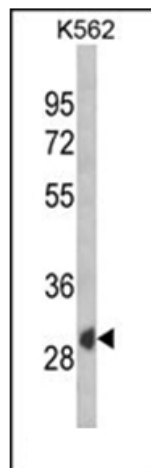
Synonyms: SFRP-1, FRP-1, FRP1, FRP, SARP2, SARP-2

Note: **Molecular Weight:** 35386 Da

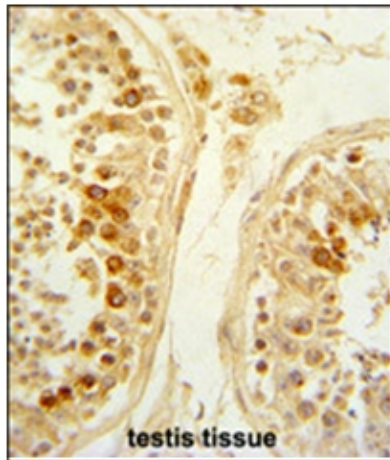
Protein Families: Adult stem cells, Cancer stem cells, Druggable Genome, ES Cell Differentiation/IPS, Secreted Protein, Stem cell relevant signaling - Wnt Signaling pathway, Transmembrane

Protein Pathways: Wnt signaling pathway

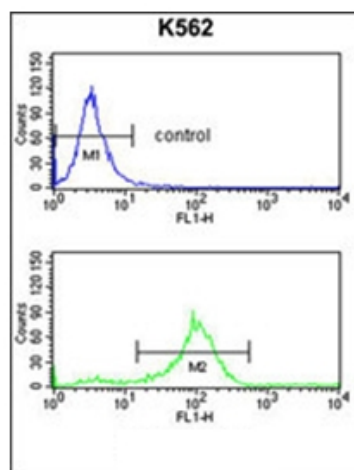
Product images:



Western blot analysis of SFRP1 Antibody (N-term) in K562 cell line lysates (35ug/lane). SFRP1 (arrow) was detected using the purified Pab.



Formalin-Fixed and paraffin-Embedded Human testis tissue reacted with SFRP1 Antibody (N-term), which was peroxidase-conjugated to the secondary antibody, followed by DAB staining. This data demonstrates the use of this antibody for immunohistochemistry; clinical relevance has not been evaluated.



Flow Cytometry analysis of K562 cells using SFRP1 Antibody (N-term) (Bottom histogram) compared to a negative control cell (top histogram). FITC-conjugated Goat-anti-Rabbit secondary antibodies were used for the analysis.