

## Product datasheet for **AP53872PU-N**

### SF4 (SUGP1) (Center) Rabbit Polyclonal Antibody

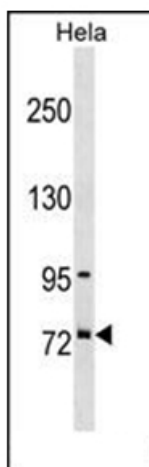
#### Product data:

Product Type:	Primary Antibodies
Applications:	WB
Recommended Dilution:	ELISA: 1/1,000. Western blotting: 1/100-1/500.
Reactivity:	Human
Host:	Rabbit
Isotype:	Ig
Clonality:	Polyclonal
Immunogen:	conjugated synthetic peptide between 363-393 amino acids from the Central region of Human SF4
Specificity:	Recognizes SF4 (Center).
Formulation:	PBS with 0.09% (W/V) Sodium Azide as preservative State: Aff - Purified State: Liquid purified Ig fraction
Concentration:	lot specific
Purification:	Protein A column followed by peptide Affinity purification
Conjugation:	Unconjugated
Storage:	Store the antibody undiluted at 2-8°C for one month or (in aliquots) at -20°C for longer. Avoid repeated freezing and thawing.
Stability:	Shelf life: one year from despatch.
Gene Name:	SURP and G-patch domain containing 1
Database Link:	<a href="#">Entrez Gene 57794 Human Q8IWZ8</a>
Background:	SF4 is a member of the SURP family of splicing factors.
Synonyms:	RBP, F23858
Note:	<b>Molecular Weight:</b> 72471 Da



[View online »](#)

## Product images:



Western blot analysis using SF4 Antibody (Center) in HeLa cell line lysates (35ug/lane). This demonstrates the SF4 antibody detected the SF4 protein (arrow).