

Product datasheet for **AP53863PU-N**

SERPINE2 (Center) Rabbit Polyclonal Antibody

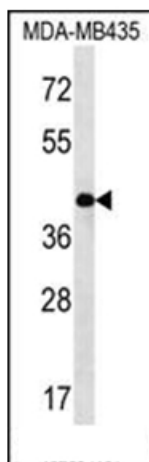
Product data:

Product Type:	Primary Antibodies
Applications:	IHC, WB
Recommended Dilution:	ELISA: 1/1,000. Western blotting: 1/100-1/500. Immunohistochemistry: 1/50-1/100.
Reactivity:	Human
Host:	Rabbit
Isotype:	Ig
Clonality:	Polyclonal
Immunogen:	KLH conjugated synthetic peptide between 105-136 amino acids from the Central region of Human SERPINE2.
Specificity:	Recognizes SERPINE2 (Center).
Formulation:	PBS with 0.09% (W/V) Sodium Azide as preservative State: Aff - Purified State: Liquid purified Ig fraction
Concentration:	lot specific
Purification:	Protein A column followed by peptide Affinity purification
Conjugation:	Unconjugated
Storage:	Store the antibody undiluted at 2-8°C for one month or (in aliquots) at -20°C for longer. Avoid repeated freezing and thawing.
Stability:	Shelf life: one year from despatch.
Gene Name:	serpin family E member 2
Database Link:	Entrez Gene 5270 Human P07093
Background:	SERPINE2 is a serine protease inhibitor with activity toward thrombin, trypsin, and urokinase. Promotes neurite extension by inhibiting thrombin. Binds heparin.
Synonyms:	Serpin E2, PN1, PN-1, PI7, PI-7

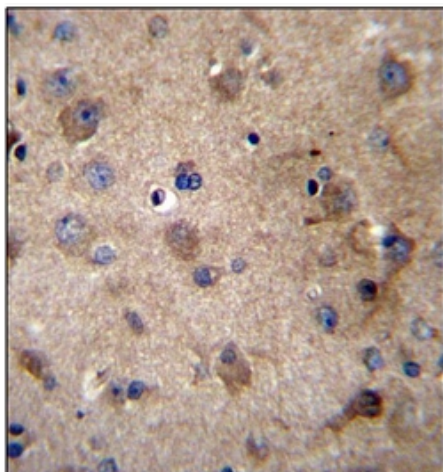


[View online »](#)

Note: **Molecular Weight:** 44002 Da
Protein Families: Druggable Genome, Secreted Protein

Product images:

Western blot analysis using SERPINE2 Antibody (Center) in MDA-MB435 cell line lysates (35ug/lane). This demonstrates the SERPINE2 antibody detected the SERPINE2 protein (arrow).



Immunohistochemistry analysis in Formalin Fixed, Paraffin Embedded Human brain tissue stained with SERPINE2 antibody (Center) followed by peroxidase conjugation of the secondary antibody and DAB staining. This data demonstrates the use of SERPINE2 Antibody (Center) for immunohistochemistry. Clinical relevance has not been evaluated.