

Product datasheet for **AP53860PU-N**

GCET1 (SERPINA9) (Center) Rabbit Polyclonal Antibody

Product data:

| | |
|-----------------------|---|
| Product Type: | Primary Antibodies |
| Applications: | FC, IHC, WB |
| Recommended Dilution: | Western blotting: 1/1000. Flow Cytometry: 1/10-1/50. Immunohistochemistry (FFPE tissue): 1/10-1/50. |
| Reactivity: | Human |
| Host: | Rabbit |
| Isotype: | Ig |
| Clonality: | Polyclonal |
| Immunogen: | KLH conjugated synthetic peptide between 194-222 amino acids from the Central region of Human SERPINA9. |
| Specificity: | This antibody recognizes SERPINA9 (Center). |
| Formulation: | PBS with 0.09% (W/V) Sodium Azide as preservative. State: Aff - Purified State: Liquid purified Ig fraction. |
| Concentration: | lot specific |
| Purification: | Protein A Chromatography followed by peptide Affinity purification. |
| Conjugation: | Unconjugated |
| Storage: | Store the antibody undiluted at 2-8°C for one month or (in aliquots) at -20°C for longer. Avoid repeated freezing and thawing. |
| Stability: | Shelf life: one year from despatch. |
| Gene Name: | serpin family A member 9 |
| Database Link: | Entrez Gene 327657 Human Q86WD7 |
| Background: | SERPINA9 is a protease inhibitor that inhibits trypsin and trypsin-like serine proteases (in vitro). This protein inhibits plasmin and thrombin with lower efficiency (in vitro). |

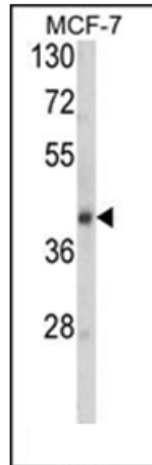


[View online »](#)

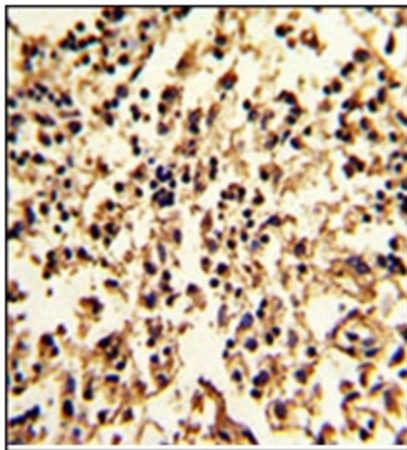
Synonyms: Germinal center B-cell-expressed transcript 1 protein, Serpin A9, UNQ692/PRO1337, SERPINA11, GCET1

Protein Families: Druggable Genome, Secreted Protein, Transmembrane

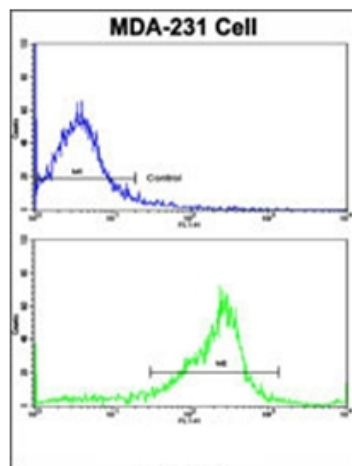
Product images:



Western blot analysis of SERPINA9 Antibody (Center) in MCF-7 cell line lysates (35 ug/lane). SERPINA9 (arrow) was detected using the purified Pab.



Formalin-Fixed, Paraffin-Embedded Human lymph with SERPINA9 Antibody (Center), which was peroxidase-conjugated to the secondary antibody, followed by DAB staining. This data demonstrates the use of this antibody for Immunohistochemistry. Clinical relevance has not been evaluated.



Flow Cytometric analysis of MDA-231 cells using SERPINA9 Antibody (Center) (bottom Histogram) compared to a Negative Control cell (top Histogram). FITC-conjugated Goat-anti-Rabbit secondary antibodies were used for the analysis.