

Product datasheet for **AP53858PU-N**

Protein C inhibitor (SERPINA5) (N-term) Rabbit Polyclonal Antibody

Product data:

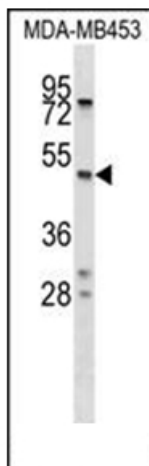
Product Type:	Primary Antibodies
Applications:	WB
Recommended Dilution:	ELISA: 1/1,000. Western blotting: 1/100-1/500.
Reactivity:	Human
Host:	Rabbit
Isotype:	Ig
Clonality:	Polyclonal
Immunogen:	KLH conjugated synthetic peptide between 4-33 amino acids from the N-terminal region of Human SERPINA5
Specificity:	Recognizes SERPINA5 (N-term).
Formulation:	PBS with 0.09% (W/V) Sodium Azide as preservative State: Aff - Purified State: Liquid purified Ig fraction
Concentration:	lot specific
Purification:	Protein A column followed by peptide Affinity purification
Conjugation:	Unconjugated
Storage:	Store the antibody undiluted at 2-8°C for one month or (in aliquots) at -20°C for longer. Avoid repeated freezing and thawing.
Stability:	Shelf life: one year from despatch.
Gene Name:	serpin family A member 5
Database Link:	Entrez Gene 5104 Human P05154
Background:	SERPINA5 inhibits activated protein C as well as plasminogen activators.
Synonyms:	Serpin A5, PAI-3, PAI3, PLANH3, PCI, PROCI
Note:	Molecular Weight: 45702 Da
Protein Families:	Druggable Genome, Secreted Protein



[View online »](#)

Protein Pathways: Complement and coagulation cascades

Product images:



Western blot analysis of SERPINA5 Antibody (N-term) in MDA-MB453 cell line lysates (35ug/lane). This demonstrates the SERPINA5 antibody detected the SERPINA5 protein (arrow).