

Product datasheet for **AP53855PU-N**

alpha 1 Antitrypsin (SERPINA1) (Center) Rabbit Polyclonal Antibody

Product data:

Product Type:	Primary Antibodies
Applications:	WB
Recommended Dilution:	ELISA: 1/1,000. Western blotting: 1/100-1/500.
Reactivity:	Human
Host:	Rabbit
Isotype:	Ig
Clonality:	Polyclonal
Immunogen:	KLH conjugated synthetic peptide between 165~195 amino acids from the Central region of Human SERPINA1.
Specificity:	Recognizes SERPINA1 (Center).
Formulation:	PBS with 0.09% (W/V) Sodium Azide as preservative State: Purified State: Liquid purified Ig fraction
Concentration:	lot specific
Purification:	Protein A column followed by peptide Affinity purification
Conjugation:	Unconjugated
Storage:	Store the antibody undiluted at 2-8°C for one month or (in aliquots) at -20°C for longer. Avoid repeated freezing and thawing.
Stability:	Shelf life: one year from despatch.
Gene Name:	serpin family A member 1
Database Link:	Entrez Gene 5265 Human P01009
Background:	SERPINA1 is secreted and is a serine protease inhibitor whose targets include elastase, plasmin, thrombin, trypsin, chymotrypsin, and plasminogen activator. Defects in this gene can cause emphysema or liver disease.
Synonyms:	SERPINA1, AAT



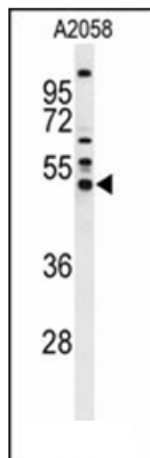
[View online »](#)

Note: **Molecular Weight:** 46737 Da

Protein Families: Druggable Genome, ES Cell Differentiation/IPS, Secreted Protein

Protein Pathways: Complement and coagulation cascades

Product images:



Western blot analysis of SERPINA1 Antibody (Center) in A2058 cell line lysates (35ug/lane). SERPINA1 (arrow) was detected using the purified Pab.